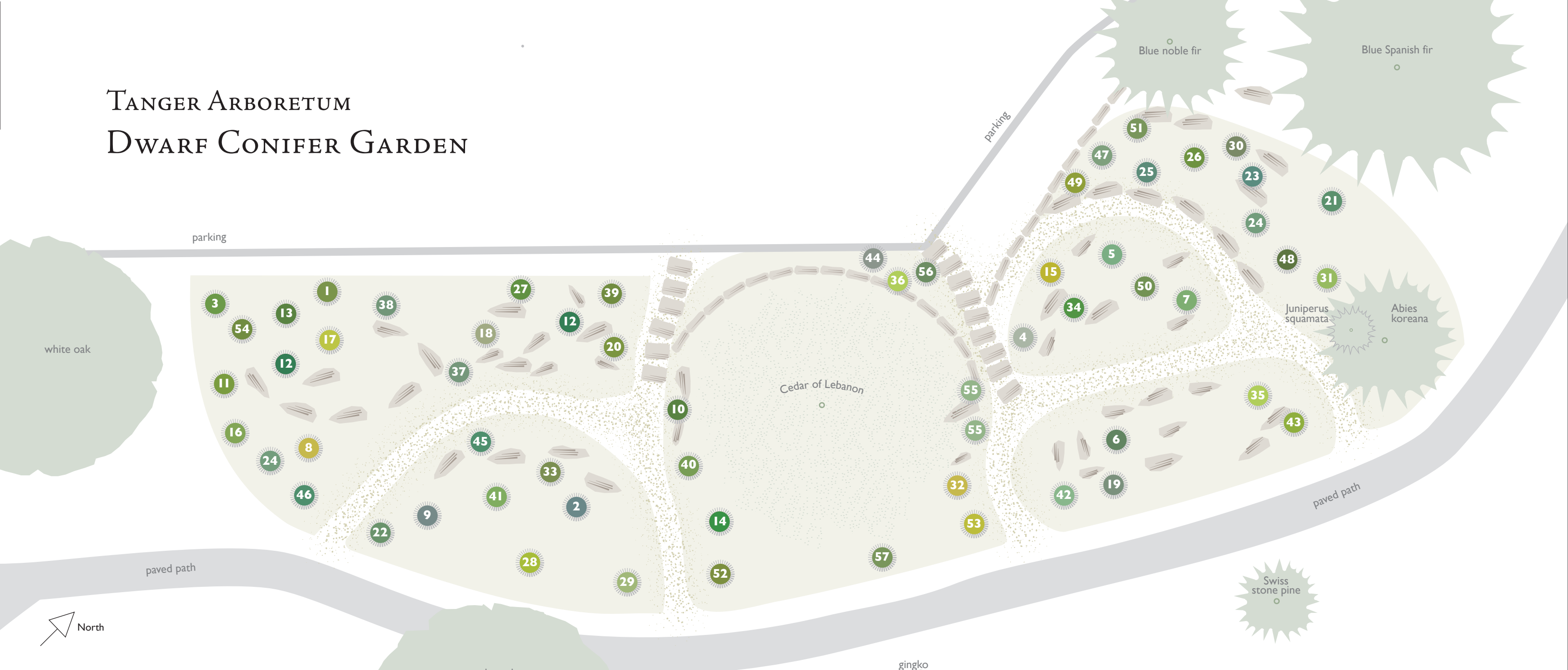


# TANGER ARBORETUM DWARF CONIFER GARDEN



- |  |  |  |   |   |  |  |
|--|--|--|---|---|--|--|
| <p>white oak</p> <ul style="list-style-type: none"> <li>1 Balsam fir<br/><i>Abies balsamiae</i> 'Piccolo'</li> <li>2 Korean fir<br/><i>Abies koreana</i> 'Bonsai Blue'</li> <li>3 Korean fir<br/><i>Abies koreana</i> 'Cis'</li> <li>4 Korean fir<br/><i>Abies koreana</i> 'Ice Breaker'</li> <li>5 Miniature alpine fir<br/><i>Abies lasiocarpa</i> 'Lopalpun'</li> <li>6 Korean fir<br/><i>Abies koreana</i> 'Silber Mavers'</li> <li>7 Korean fir<br/><i>Abies koreana</i> 'Silberperle'</li> <li>8 Nordmann fir<br/><i>Abies nordmanniana</i> 'Golden Spreader'</li> <li>9 Spanish fir<br/><i>Abies pinsapo</i> 'Horstmann'</li> </ul> | <p>white oak</p> <ul style="list-style-type: none"> <li>10 Hinoki cypress<br/><i>Chamaecyparis obtusa</i> 'Ellie B.'</li> <li>11 Hinoki cypress<br/><i>Chamaecyparis obtusa</i> 'Gemstone'</li> <li>12 Hinoki cypress<br/><i>Chamaecyparis obtusa</i> 'Nana'</li> <li>13 Hinoki cypress<br/><i>Chamaecyparis obtusa</i> 'Spiralis'</li> <li>14 Hinoki cypress<br/><i>Chamaecyparis obtusa</i> 'Briget'</li> <li>15 Hinoki cypress<br/><i>Chamaecyparis obtusa</i> 'Butter Ball'</li> <li>16 Sawara cypress<br/><i>Chamaecyparis pisifera</i> 'Cumulus'</li> <li>17 Sawara cypress<br/><i>Chamaecyparis pisifera</i> 'Golden Pin Cushion'</li> <li>18 Sawara cypress<br/><i>Chamaecyparis pisifera</i> 'White Pygmy'</li> </ul> | <p>scarlet oak</p> <ul style="list-style-type: none"> <li>19 Atlantic white cedar<br/><i>Chamaecyparis thuyoides</i> 'Blue Rock'</li> <li>20 Japanese cedar<br/><i>Cryptomeria japonica</i> 'Tansu'</li> <li>21 Alaskan cedar<br/><i>Cupressus nootkatensis</i> 'Strict Weeping'</li> <li>22 Common juniper<br/><i>Juniper communis</i> 'Compressa'</li> <li>23 Himalayan juniper<br/><i>Juniper squamata</i> 'Blue Star'</li> <li>24 Japanese larch<br/><i>Larix kaempferi</i> 'Wolterdingen'</li> <li>25 Colorado spruce<br/><i>Picea pungens</i> 'St. Mary's Broom'</li> <li>26 Norway spruce<br/><i>Picea abies</i> 'Medusa'</li> <li>27 Norway spruce<br/><i>Picea abies</i> 'Pusch'</li> </ul> | <p>gingko</p> <ul style="list-style-type: none"> <li>28 Norway spruce<br/><i>Picea abies</i> 'Vermont Gold'</li> <li>29 Norway spruce<br/><i>Picea abies</i> 'Thumbelina'</li> <li>30 Siberian spruce<br/><i>Picea omorika</i> 'Pendulata Bruns'</li> <li>31 Siberian spruce<br/><i>Picea omorika</i> 'Pevé Tijn'</li> <li>32 Oriental spruce<br/><i>Picea orientalis</i> 'Firefly'</li> <li>33 Oriental spruce<br/><i>Picea orientalis</i> 'Mount Vernon'</li> <li>34 Oriental spruce<br/><i>Picea orientalis</i> 'Professor Langner'</li> <li>35 Oriental spruce<br/><i>Picea orientalis</i> 'Tom Thumb'</li> <li>36 Oriental spruce<br/><i>Picea orientalis</i> 'Tom Thumb' (on standard)</li> </ul> | <ul style="list-style-type: none"> <li>37 Colorado spruce<br/><i>Picea pungens</i> 'Blue Pearl'</li> <li>38 Korean pine<br/><i>Pinus koreana</i> 'Gee Broom'</li> <li>39 Bosnian white pine<br/><i>Pinus leucodermis</i> 'Smidtii'</li> <li>40 Japanese white pine<br/><i>Pinus parviflora</i> 'Catherine Elizabeth'</li> <li>41 Japanese white pine<br/><i>Pinus parviflora</i> 'Hagoromo'</li> <li>42 Japanese white pine<br/><i>Pinus parviflora</i> 'Kin-po'</li> <li>43 Japanese white pine<br/><i>Pinus parviflora</i> 'Regenhold Broom'</li> <li>44 Japanese white pine<br/><i>Pinus parviflora</i> 'Tanima-no-yuki'</li> <li>45 Eastern white pine<br/><i>Pinus strobus</i> 'Sea Urchin'</li> </ul> | <ul style="list-style-type: none"> <li>46 Eastern white pine<br/><i>Pinus strobus</i> 'Sea Urchin' (on standard)</li> <li>47 Eastern white pine<br/><i>Pinus strobus</i> 'Tiny Kurls'</li> <li>48 Japanese umbrella pine<br/><i>Pinus sciadopitys verticillata</i> 'Gruene Kugel'</li> <li>49 Virginia shrub pine<br/><i>Pinus virginiana</i> 'Driscoll'</li> <li>50 Bald cypress<br/><i>Taxodium distichum</i> 'Cave Hill'</li> <li>51 Bald cypress<br/><i>Taxodium distichum</i> 'Pevé Minaret'</li> <li>52 English yew<br/><i>Taxus baccata</i> 'Silver Spire'</li> <li>53 Western red-cedar<br/><i>Thuja plicata</i> 'Whipcord'</li> </ul> | <ul style="list-style-type: none"> <li>54 Hiba arborvitae<br/><i>Thuja plicata</i> 'Compacta'</li> <li>55 Canadian Hemlock<br/><i>Tsuga canadensis</i> 'Betty Rose'</li> <li>56 Canadian Hemlock<br/><i>Tsuga canadensis</i> 'Cole's Prostrate'</li> <li>57 Canadian Hemlock<br/><i>Tsuga canadensis</i> 'Jeddeloh'</li> </ul> |
|--|--|--|---|---|--|--|