

**Application for International Camellia Garden of  
Excellence**

**QUINTEIRO DA CRUZ**

**(Pontevedra, Spain)**



Quinteiro da Cruz

A Cruz, Lois - (Ribadumia – Pontevedra, Spain)



**Quinteiro da Cruz**  
jardín botánico - colección de Camelias



**Application for International  
Camellia Garden of Excellence  
QUINTEIRO DA CRUZ  
(Pontevedra, Spain)**

**Quinteiro da Cruz. A Cruz, Lois - Ribadumia – Pontevedra, Spain**

Published by Sociedad Española de la Camelia

Depósito Legal: PO 716-2017

Text, photographs and maps:

Estación Fitopatológica Areeiro, Deputación de Pontevedra

Pazo Quintero da Cruz

Information:

[info@pazoquinteirodacruz.com](mailto:info@pazoquinteirodacruz.com)

[info@cameliagalicia.com](mailto:info@cameliagalicia.com)

All rights reserved. No part of this publication may be reproduced, in any form or by any means without permission from the authors ou editor



## Contents

Letter for the president/Secretary of the ICS .....	5
Request letter to the director of ICS in Spain .....	7
Scheme of the Garden of Quinteiro da Cruz.....	9
A History of Quinteiro da Cruz .....	10
Statements for the verification on the criteria of the International Camellia Gardens of Excellence .....	14
1. The garden is well established, and the ownership and management structures are stable and perpetual as far as can reasonably assessed.....	14
2. The garden is open regularly to the public. ....	14
3. Admission may be free, by donation or set fee as the garden determinates to its needs.....	14
4. The garden need not be devoted completely to camellias, but must be feature them prominently, accessible and maintained to a high standard in a manner suitable to the garden and its climate. A minimum collection of 200 cultivars or species is required.....	14
5. The garden maintains a register of all its camellias, and their location in the garden.....	15
6. All cultivars and species have identifying labels where known; unknown cultivars should bear labels explaining the lack of identification. ....	15
7. The garden has some method of making cultural information available to visiting members of the public.....	15
8. The garden shall be a member of the International Camellia Society, and shall agree to display information about the Society, including contact addresses, to be available for prospective members.....	16
9. A copy of the International Camellia Register is readily available for reference purposes.....	16
10. Non-obligatory but desirable features shall be:.....	16
a) Research programmes on camellia culture, heat or cold tolerance, pest or disease control, or other subjects adding to the overall knowledge of camellias.....	16
b) Shows or displays during flowering times. ....	16
d) The maintenance of special theme collections such as species or named sasanqua cultivars....	17
e) The stocking of camellia literature for sale and/or publication of such literature by the garden itself. ....	17
f) Any other initiative by the garden which promotes enthusiasm for and better growing of camellias. ....	17
Annexe A. Maps .....	19
Map with garden areas .....	19
Woods of Words and Ancient garden.....	20



Games area, Maruxa Lago Walk, Pedrito Walk and Chapel Walk .....	21
Camellia forests, Chapel Area and Winery .....	22
Victoriano Piñeiro Walk, Carlota walk and Pedrito Walk .....	23
Annexe B. List of plants.....	24
Annexe C. List of camellias.....	35
Annexe D. Pictures .....	48
Camellias at Quinteiro da Cruz. ....	51
Labels .....	53
Events and projects.....	57
Shop .....	59
AR application .....	60



Pontevedra. October 30, 2017

Dear ICS President and Region Directors:

We are writing to submit our application for recognition of the garden at Pazo Quinteiro da Cruz located in Ribadumia (Pontevedra, Spain) – as an International Camellia Garden of Excellence.

On 18 March 2014, the garden at Pazo Quinteiro da Cruz had the honour of a visit from members of the ICS who were touring the area following the Pontevedra Congress. On that occasion, many of the members expressed the opinion that, given both the collection found there and the interest of the owners in capitalizing on the camellia, the garden was worthy of inclusion in the list of Camellia Gardens of Excellence. This encouraged us to undertake the necessary work to improve the garden in order to comply with all the criteria set out in the ICS Recognition Scheme, with an eye to applying for admission in 2018 and passing the inspection by ICS directors.

Pazo Quinteiro da Cruz is an 18th-century country house and a fine example of Galician neoclassical architecture. The property includes function rooms, product rooms, a vineyard and winery, a chapel, two typical Galician stone crosses, a dovecote, two *horreos* (traditional raised granaries), and various romantic elements such as fountains, statues and sundials.

The current layout of the garden was established between 1975 and 1980 by Victoriano Piñeiro Acosta, who worked to restore the existing flora and expand the botanical collection with camellias and other species imported from various locations around the world, based on landscaping and ornamental criteria. His descendants, the Piñeiro Lago family, who currently own the property, subsequently continued to increase the garden's diversity, incorporating both native and foreign species. Pazo Quinteiro da Cruz occupies seven hectares, of which three are allocated to Albariño vineyards. The remainder constitute the garden.

As the application sponsor, I will now describe the main characteristics of this garden and demonstrate how it qualifies for inclusion in the International Camellia Garden of Excellence category, joining the other gardens which already make up this group.

The garden is home to over 350 plant species from all over the world. Highlights include: *Aesculus hippocastanum*, *Araucaria brasiliensis*, *Buxus sp.*, *Cedrus atlantica*, *Cupressus sempervirens*, *Erythrina crista-galli*, *Lagerstroemia indica*, *Liquidambar styraciflua*, *Magnolia grandiflora*, *Phoenix dactylifera*, *Pinus pinea*, *Robinia pseudoacacia*, *Cordyline australis*, *Callistemon*, *Chamaecyperis pisifera*, *Proteas*, *Banksia* and *Chorisia*, among others. The majority have been identified and labelled.

The owners are focusing heavily on the camellia garden, as the plant is the property's most important species, leading it to be known as the paradise of the camellia. It features some 2000 camellias, made up of 600 cultivars and 70 species. This has won the garden a number of awards,



INTERNATIONAL  
CAMELLIA SOCIETY  
SPAIN

the most important being the Gold Camellia at the International Camellia Exhibition in 1988, 1990 and 1998.

The camellia plants have been inspected with the assistance of technicians from the Areeiro Phytopathological Station (EFA) and have been labelled with signs indicating their species and cultivar. Those specimens grown from the garden's own seeds and a few which it has not been possible to classify are labelled only with the species name or have been left unlabelled. With the assistance of the EFA, a map has been created, showing the location of the different plant species and camellias, and an inventory has been completed.

The family is committed to enlarging the collection and continuing to properly maintain the camellia garden for a long time to come, as well as using it effectively as a gathering space for camellia-related events.

The garden is part of Galicia's Route of the Camellia, created by the Xunta de Galicia in 2006 through a joint effort with the Spanish Camellia Society and the Areeiro Phytopathological Station (Pontevedra Provincial Council), under the supervision of the Turismo de Galicia (Galician Tourist Board). The aim of this tourist trail is to promote the camellia as a distinctive tourism product for the northwest region of Spain. The trail initially included eight gardens, but was expanded in 2009 to include the gardens at Pazo Quintero da Cruz and Pazo de Lourizán. It is currently made up of twelve gardens.

Since that time, visitor numbers have increased each year, making it one of the most important resources for promoting the camellia in our autonomous community. The owners organize a variety of events and activities, as well as working with other gardens and organizations in support of the camellia, promoting this flower throughout the entire year.

We would greatly appreciate it if the Quintero da Cruz Garden could be evaluated with a view to achieving recognition as one of the International Camellia Gardens of Excellence.

We thank you for your consideration of our application.

Yours faithfully,

Dra Carmen Salinero Corral

Director ICS - Spain





*Dra. Carmen Salinero Corral*  
*Director ICS - Spain*

*Ribadumia (Pontevedra, Spain), 27 October, 2017*

Dear ICS-Spain Director

The Quinteiro da Cruz garden situated in Ribadumia, a province of Pontevedra (Spain), is known in our community for the variety of plant species, and specifically for the quality and variety of its camellia, for which it was selected for inclusion in the Ruta de la Camelia of Galicia.

The effort undertaken by our family in recent years in the improvement, maintenance and conservation of all the species in the garden has been made in conjunction with projects aimed at raising awareness of its botanical heritage, with a special focus on the value of the camelia, highlighting it as our most important flower in tours for locals, visitors from other parts of Spain and international guests.

Throughout 2017 we have been working in order to adapt our garden to the excellence conditions with the objective of including it in the "International Camellia Garden of Excellence" category, given by the International Camellia Society.

For this work we have counted on the experience of Estación Filopatológica de Areiro camellia team (Pontevedra province), to whom we'd like to express our gratitude, since it's thanks to their knowledge we identified different species and cultivars, developed plans and wrote up a dossier compiling all the necessary documents for the application to become an "International Camellia Garden of Excellence".

At present, we can claim that our garden accomplishes each and every point of the ICS regulations criteria, therefore, as the Spanish director and responsible for this subject, we apply for the realization on your behalf, of an official presentation of Quinteiro da Cruz's Garden to the ICS, in order to aim for the International Excellence's nomination. It would be a great honor to obtain the "International Camellia Garden of Excellence" recognition for the Quinteiro da Cruz's Garden.

Yours Sincerely,

Pedro & Beatriz Piñeiro Lago





## Scheme of the Garden of Quinteiro da Cruz

**Location:** Pontevedra (Spain)

**Owner:** Piñeiro Lago family

**Address:** A Cruz, Lois - Ribadumia, Pontevedra (Spain)

**Surface area:** 7 ha

Camellias planted in the garden: around 2000 camellia specimens (more than 600 *Camellia* cultivars, about 70 species and more than 100 hybrids)

Other plants: more than 800 specimens belonging to around 250 plant genus belonging to 97 families and almost 320 species

Facilities: manor house, chapel, winery, car parks, meeting room, toilets, shop, benches, etc.



Night view of the main building of Quinteiro da Cruz



## A History of Quinteiro da Cruz

This property is located in municipality of Ribadumia, Pontevedra, North-West Spain, heart of the region of Salnés in the Rías Baixas. The garden of Quinteiro da Cruz is framed by the route of the camellia and the wine route.

Quinteiro da Cruz is a property owned by the Piñeiro Lago family, with an area of 70,000 m<sup>2</sup>, of which 30,000 m<sup>2</sup> are dedicated to the plantation of the albariño grape. The house dates from the end of the 18th century, and is an example of Galician neoclassical noble architecture. In the Seventies it was acquired by the Piñeiro Lago family, who renovated the former garden and later refurbished the house, the courtyard and other buildings.

On the property there is also a 16th century chapel with a 12<sup>th</sup> century Romanesque baptismal font next to it.

It also has two wineries, the older one with 18<sup>th</sup> century wine presses, and another 20<sup>th</sup> century one equipped with modern technology for making Albariño wine (D.O. Rías Baixas), typical of the area where the property is located.



Picture of the chapel and baptismal Font next to it.



Image of the older winery.

The estate also contains romantic elements like stone fountains, a dovecote, an old-style laundry, statues and sundials. It has two crosses from the sixteenth and twentieth centuries, respectively, one big stone granary from the 18th century, and another granary of stone and wood from the 19th century, located on a pond that is accessed by a double stone staircase.

The estate belongs to the Foundation of Unique and Historic Homes of Spain (FCHS) and is included in the Patrivit project (a European project that locates and catalogues wine-making heritage).



The garden is made up of two well-defined areas; an older one created at the end of the 19<sup>th</sup> century, and another from the end of the 20<sup>th</sup> century. The older area was designed by Martin Dorgambide, a gardener of French origin, and it has mature camellias, araucarias, palms, cordyline, rhododendron and azalea, box hedges, arbours and other romantic elements. The design and creation of the more modern part was carried out by Victoriano Piñeiro Acosta, who also restored the older part. In the new garden, which is divided into several areas (Maruxa Lago Walk, Victoriano Piñeiro Walk, Carlota Walk, Pedrito Walk, Games Area, Wood of Words, woodland, etc.), botanical species from different continents were introduced and a magnificent collection of camellias was created. Nowadays this work is being carried on by Victoriano's heirs, especially Pedro Piñeiro, former president of the Spanish ICS.



Font located in the ancient garden.



Picture of the two granaries and the stone cross. On the right, detail of the top of the stone cross.



In 2014 the garden was awarded the Society of Friends of the Madrid Botanical Garden prize.

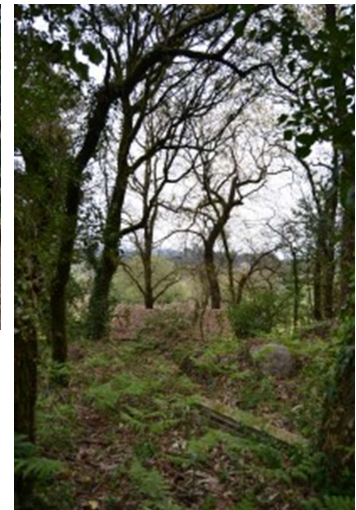


The garden is surrounded by vineyards and native woodland with mature trees (oak, chestnut, pine, box and laurel, among others). The vineyard covers almost three hectares and grows Albariño grapes, used to make the wine that bears the name of the estate: Albariño Quinteiro da Cruz. The Quinteiro da Cruz winery is also included in the Wine Route of Spain in the Accessible Tourism programme,



developed by PREDIF (State Representative Platform of the Physically Disabled) for awareness, training, counselling and investigation of accessibility and customer service for those with different needs in the tourism and leisure sector.

Image of vineyard where 'Albariño' grapes growth, and detail of a bottle of Albariño Quinteiro da Cruz, decorated with camellias.



Games Area (on the left), Piñeiro's Fountain (centre) and forest (on the right).



Victoriano Piñeiro Walk (on the left) and Maruxa Lago Walk (on the right), areas belonging to the new garden.



It is also part of SICTED, a project to improve the quality of tourist destinations sponsored by the Secretary of State for Tourism in Spain (SET).

Quinteiro da Cruz has the soul of a museum, providing a home for over 250 genus of plants from the 5 continents, where you can see, among other trees of interest, such specimens as: *Aesculus hippocastanum*, *Araucaria brasiliensis*, *Banksia*, *Buxus sp.*, *Callistemon*, *Cedrus atlantica*, *Chamaecyperis pisifera*, *Chorisia Cordyline australis*, *Cupressus sempervirens*, *Erythrina crista-galli*, *Lagerstroemia indica*, *Liquidambar styraciflua*, *Magnolia grandiflora*, *Pinus pinea*, *Phoenix dactylifera*, *Phytolaca dioica*, *Protea*, *Robinia pseudoacacia*, etc. Annexe B.

However, camellias are true protagonists of the garden, for which it is known as the paradise of the camellia. Year after year there bloom roughly 2,000 exemplars of about 600 varieties from almost 70 different species, including: *Camellia assimilis*, *C. caudata*, *C. cuspidata*, *C. fluviatilis*, *C. nitidissima*, *C. granthamiana*, *C. sasanqua*, *C. sinensis*, with highlights being exemplars of *C. japonica* and *C. reticulata*, thanks to which the “Camellia Gold award” at the International Camellia Show was obtained on several occasions (1988, 1990 and 1998).



Camellia Gold award at the International Camellia Show was obtained on 1988, 1990 and 1998.

Among the camellia cultivars, it is possible to enjoy ‘Angelina Vieira’, ‘Augusto Leal de Gouveia Pinto’, ‘Grace Albritton’, ‘Happy Higo’, ‘Mathotiana Alba’, ‘Nuccio’s Gem’, ‘Tama-no-ura’, ‘IncarnataCamurça’, ‘Covina’ by *C. japonica*; ‘Captain Rawes’, ‘Miss Tulare’, ‘Interval’ and ‘Dr. Clifford Parks’ by *C. reticulata*; ‘Rendezvous’ by *C.x williamsii*. Also noteworthy is a small plantation of *Camellia sinensis* for tea making. Annexe C.

The Quinteiro da Cruz collection of camellias has a few specimens dating from the end of the 19th century, distributed around the house in an area designed by the landscaper Dorgambide. These specimens are trees that have reached significant size with sturdy trunks, but there is one that stands out among them, a specimen of *Camellia japonica* ‘Covina’.

In the garden you can enjoy the camellia flower all year round, thanks to the great variety of camellia species, which is also the first collection of camellias to feature augmented reality (AR), a project that generates experiences and provides knowledge about the world of the camellia, of botany and nature with evocative language, magic and mystery: an interactive classroom where nature itself teaches you. Thanks to AR and to the great variety of species, in the botanical garden of the Pazo Quinteiro da Cruz you can enjoy the camellia flower all year round.

The garden has been included in the Camellia Route of Galicia since 2009, the year in which the original route of 8 gardens was increased to 10. Annexe D.



## Statements for the verification on the criteria of the International Camellia Gardens of Excellence

1. The garden is well established, and the ownership and management structures are stable and perpetual as far as can reasonably assessed.

The garden has been in the care of the Piñeiro Lago family since the Seventies. This family has been responsible for restoring and enlarging the original late-19<sup>th</sup> century garden to its present-day state, and continues to do so by maintaining, improving and extending the garden and its buildings.

2. The garden is open regularly to the public.

The garden is open to the public all year round, but always by appointment as it is a private property and a family home.

Individual or group visits are welcomed. These are always led by experienced staff and last approximately 2 hours. During this garden visit special attention is paid to the camellia collection, the chapel, the two wineries, the vineyards and woodland.

Most of the garden is adapted for visitors who are disabled or have limited mobility and there is access to suitable facilities for them.

Appointments can be made via email [info@pazoquinteirodacruz.es](mailto:info@pazoquinteirodacruz.es) or by phone: 0034 619110806 and 0034 635592215.

3. Admission may be free, by donation or set fee as the garden determinates to its needs.

The price of the admission fee varies according to whether a tasting session of the estate wines is included or not. The entrance fee is used to help maintain the garden.

4. The garden need not be devoted completely to camellias, but must be feature them prominently, accessible and maintained to a high standard in a manner suitable to the garden and its climate. A minimum collection of 200 cultivars or species is required.

The garden is not dedicated exclusively to camellias, although this genus plays an important role in it, with more than 2000 examples belonging to 70 species and more than 600 cultivars (annexes A and C). Also, there are many still-unidentified camellias and many that have grown from seed to form camellia thickets. The camellia takes the leading role in this garden and it has been awarded the "Golden Camellia" on several occasions in the International Camellia Show Competition held in Galicia since 1965.





5. The garden maintains a register of all its camellias, and their location in the garden.

A register is kept of all the camellias and camellia cultivars, as well as a plan of their location, carried out by the staff of the Areeiro Phytopathological Station (Pontevedra Provincial Council) with the help of Pedro Piñeiro Lago. The list of camellias and their location can be seen in annexes C and A.

6. All cultivars and species have identifying labels where known; unknown cultivars should bear labels explaining the lack of identification.

Almost 600 camellia cultivars have been labelled with the genus, species and name of cultivar. The examples of unidentified cultivars are still unlabelled, awaiting their correct identification.


The old plastic tags with names written in pencil have been replaced by other more durable longer-lasting ones. The specimens from seed have no label as the cultivar is unknown.

All the Camellia species are correctly labelled with the new tags (see pictures in annexe D).

Some cultivars have different labels which show a drawing of the flower, as well as the name of the species and cultivar. In a corner of the label is the Quinteiro da Cruz logo which, when scanned by a smartphone, gives information about that cultivar and the garden itself, provided that the application of the garden has been previously downloaded (annexe D).

7. The garden has some method of making cultural information available to visiting members of the public.

The garden has a website ([www.pazoquinteirodacruz.es](http://www.pazoquinteirodacruz.es)) and brochures with information about its site and history. These brochures are available in tourist offices and in the garden itself. The website can also be accessed via the Spanish Camellia Society website ([www.cameliagalicia.com/cameliagalicia.html](http://www.cameliagalicia.com/cameliagalicia.html)) and the International Camellia Society website (<https://internationalcamellia.org/the-route-of-the-camellia>).

The Augmented Reality application (AR) can be downloaded from the garden website ([www.pazoquinteirodacruz.es](http://www.pazoquinteirodacruz.es)) for access to information about camellias and the garden in three languages: English, Spanish and Galician. By pointing our device at the label on the camellia, we get general information about the plant, bloom and leaf, flowering season and other information of interest. If we also scan the Quinteiro da Cruz logo  we can take a virtual tour of the garden and admire its camellias in bloom (annexe D).



8. The garden shall be a member of the International Camellia Society, and shall agree to display information about the Society, including contact addresses, to be available for prospective members.

The garden has been a member of the International Camellia Society since the end of the 20th century, first in the name of Pedro Piñeiro Lago, who was president of the ICS in Spain before the current president, and now as Quinteiro da Cruz.

9. A copy of the International Camellia Register is readily available for reference purposes.

The books of the International Camellia Register and its Supplements are available in Quinteiro da Cruz for consultation by its visitors. Issues of the ICS journal and an extensive bibliography on the Camellia genus are also available.

Digital equipment giving access to the ICS and ICR websites, and other sites that provide information about camellias, is also available.

10. Non-obligatory but desirable features shall be:

a) Research programmes on camellia culture, heat or cold tolerance, pest or disease control, or other subjects adding to the overall knowledge of camellias.

Since 2015 the project “Feel the Camellia” is being developed in collaboration with the chef Iñaki Bretal (a highly-renowned restaurateur in Galicia and owner of the O Eirado da Leña restaurant in Pontevedra). In this project the camellia is the thread that weaves together gastronomy, vineyards and camellias, generating a life experience that allows the visitor to enjoy the camellia with all 5 senses through botany, gastronomy, technology and wellness therapies ( [www.sientelacamelia.es](http://www.sientelacamelia.es) ).

Currently there is collaboration on an investigation project with the Polytechnic University of Valencia (Textile and Paper Engineering Department) for the development of textiles treated with tea extracts that confer protection against UV rays.

b) Shows or displays during flowering times.

Although no camellia flower shows are held in Quinteiro da Cruz, the owners play an active part in other shows which take place all over Galicia from January to April, putting on display a small sample of the large variety of species and cultivars the garden has.

Its camellias were awarded the “Golden Camellia”, the highest distinction of the International Camellia show held in Galicia since 1965, in the years 1988, 1990 and 1998 (annexe D).

In May 2016 an exhibition of ink paintings of camellias was organised on site (annexe D), in which Yuguang Yang, the 2015 award winner of traditional Chinese hokaido painting, demonstrated his technique and showed some of his artworks.



In 2017 the First International Conference of the Camellia took place, with the slogan “Come and eat the camellia”. Over two days, 5 round table discussions were held in the grounds of Quinteiro da Cruz on the theme of the camellia as a cultural, gastronomic and life experience and as a magnet for tourism. Interspersing the activities there were also wellness therapies based around camellias, a Chinese tea ceremony and a virtual journey through tea-producing countries with a slide show and a tasting of different teas. These workshops are part of the “Feel the Camellia” project that Quinteiro da Cruz is developing.

Feel the Camellia is a project with the camellia as a common thread, where gastronomy, vineyards and camellias merge, generating a vivid experience, permitting the visitor to enjoy the camellia with the five senses through botany, gastronomy, technology, and wellness therapies. Iñaki Bretal, the Proprietor and Chef of Eirado da Leña, a restaurateur of renown in innovative Galician cuisine, is the person who developed the dishes incorporating the camellias (see pictures in annexe D).

On the 24th and 25th of March 2017, the 1st International Camellia Workshop took place, in which the five aspects of the Feel the Camellia project were presented through information, gastronomy, experientially, the destination, and in show cooking, with the slogan “Come and Eat the Camelia” with Iñaki Bretal directing the kitchens of Quinteiro da Cruz.

d) The maintenance of special theme collections such as species or named sasanqua cultivars.

As well as *C. japonica*, there is an extensive collection of species of *Camellia* in Quinteiro da Cruz, including yellow camellias, sasanqua and *reticulata* that can be seen throughout the garden (annexes A and C).

e) The stocking of camellia literature for sale and/or publication of such literature by the garden itself.

The issues of the International Camellia Society Journal and of the Spanish Camellia Society are available to the public.

f) Any other initiative by the garden which promotes enthusiasm for and better growing of camellias.

At present, the garden is part of Galicia’s Route of the Camellia, created by the Xunta de Galicia in 2006 through a joint effort with the Spanish Camellia Society and the Areeiro Phytopathological Station (Pontevedra Provincial Council), under the supervision of the Turismo de Galicia (Galician Tourist Board). The aim of this tourist trail is to promote the camellia as a distinctive tourism product for the northwest region of Spain. The trail initially included eight gardens, but was expanded in 2009 to include the gardens at Quinteiro da Cruz and Pazo de Lourizán. It is currently made up of twelve gardens.

Since the end of the 20th century, when Victoriano Piñeiro acquired and restored the property, he sought to encourage enthusiasm for the growing of camellias by altruistically organising literary



gatherings, cultural meetings and visits to display his camellias. His heirs are carrying on this work as a means to guarantee the sustainability of the estate.

Among the activities related to the camellia that take place on site all year round, there are also cookery workshops, expressive writing, Chinese ink painting, calligraphy; tea-picking events with the tea ceremony and tea tastings; visits that include collecting seed to make camellia oil; concerts, wellness therapies (massages, aromatherapy, reflexology...) etc.

There is a small shop where the visitor can buy jewells designed by Beatriz Piñeiro, one of the current owners, Green tea and camellia oil, as well cosmetics products made with them (body and facial creams, serum, soaps, camellia oil ...), and wine (annexe D).



## Annexe A. Maps

### Map with garden areas





Woods of Words and Ancient garden





Games area, Maruxa Lago Walk, Pedrito Walk and Chapel Walk

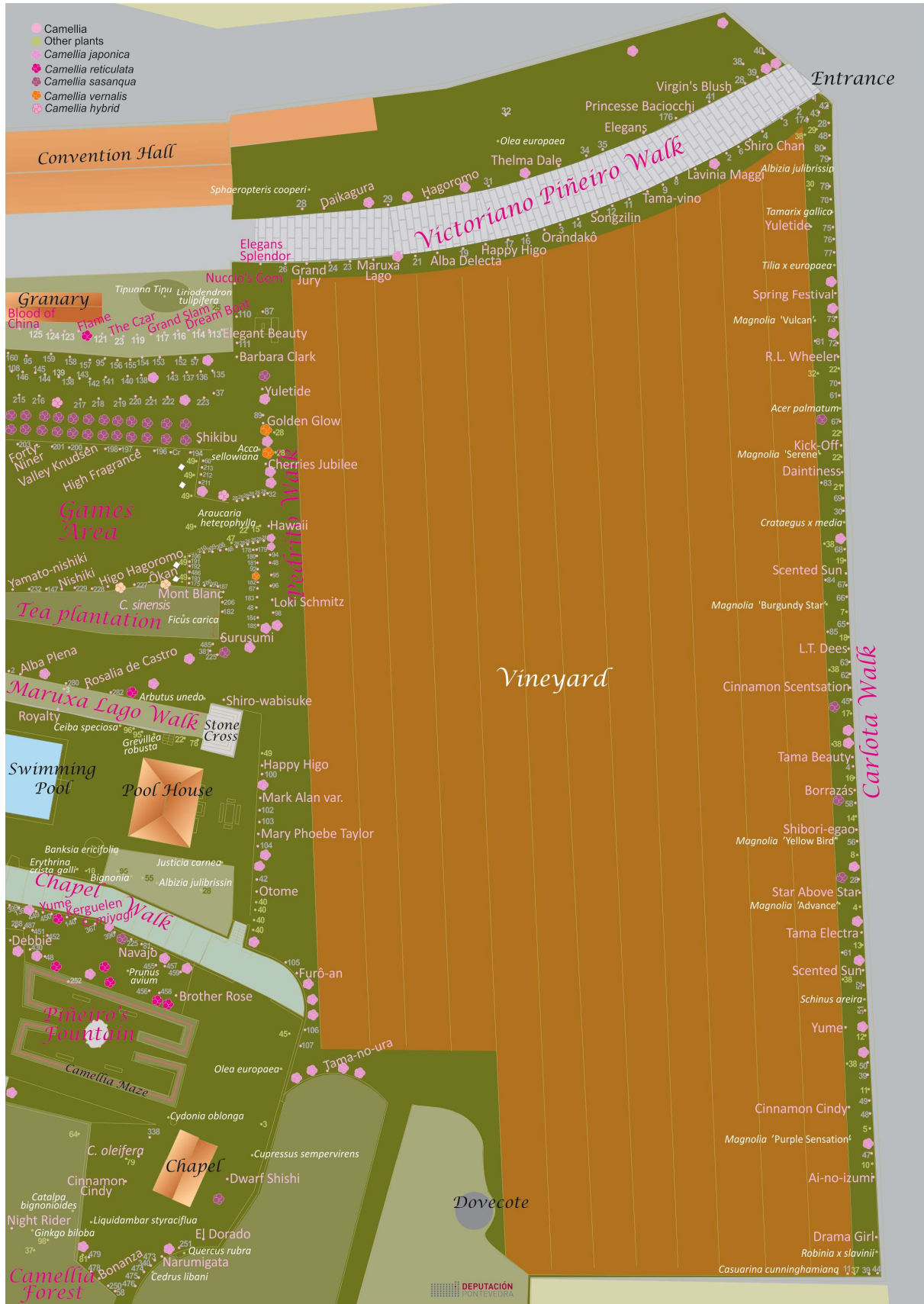








Victoriano Piñeiro Walk, Carlota walk and Pedrito Walk





## Annexe B. List of plants.

List of plants located at the garden of Quinteiro da Cruz. The code can be located at the maps.

No	Genus	Cultivar/varieties	Common name	Family	DEPUTACIÓN PONTEVEDRA
1	<i>Sphaeropteris cooperi</i> (Syn. <i>Cyathea cooperi</i> )		Giant scaly tree fern	<i>Cyatheaceae</i>	
2	<i>Tipuana Tipu</i>		Tipu, Rosewood, Pride of Bolivia	<i>Leguminosae</i>	
3	<i>Olea europaea</i>		European olive	<i>Oleaceae</i>	
4	<i>Prunus lusitanica</i>		Portugal laurel	<i>Rosaceae</i>	
5	<i>Schinus areira</i>		Devil's pepper, False pepper	<i>Anacardiaceae</i>	
6	<i>Robinia x slavonii</i>	Hillieri	Pink acacia, Pink false acacia	<i>Leguminosae</i>	
7	<i>Melaleuca hypericifolia</i>		Hillock bush	<i>Myrtaceae</i>	
8	<i>Fraxinus excelsior</i>		European ash	<i>Oleaceae</i>	
9	<i>Casuarina cunninghamiana</i>		River Sheoak	<i>Casuarinaceae</i>	
10	<i>Sorbus aucuparia</i>		Rowan, Mountain ash	<i>Rosaceae</i>	
11	<i>Koelreuteria paniculata</i>		Golden Rain Tree, Varnish Tree	<i>Sapindaceae</i>	
12	<i>Fagus sylvatica</i>		Common beech	<i>Fagaceae</i>	
13	<i>Acer palmatum</i>		Japanese maple	<i>Sapindaceae</i>	
14	<i>Liquidambar styraciflua</i>		Sweet gum	<i>Hamamelidaceae</i>	
15	<i>Weigela x</i>		Weigela	<i>Caprifoliaceae</i>	
16	<i>Punica granatum</i>		Pomegranate	<i>Lythraceae</i>	
17	<i>Populus tremula</i>		Aspen	<i>Salicaceae</i>	
18	<i>Ceiba speciosa</i> (Syn. <i>Chorisia speciosa</i> )		Silk floss tree	<i>Malvaceae</i>	
19	<i>Metrosideros robusta</i>		Northern rata	<i>Myrtaceae</i>	
20	<i>Crataegus x media</i>			<i>Rosaceae</i>	
21	<i>Laurus nobilis</i>		Bay laurel	<i>Lauraceae</i>	
22	<i>Lagerstroemia indica</i>		Crape myrtle	<i>Lythraceae</i>	
23	<i>Tilia x europaea</i>		Common lime	<i>Tiliaceae</i>	
24	<i>Tamarix gallica</i>		French tamarisk	<i>Tamaricaceae</i>	
25	<i>Albizia julibrissin</i>	sp / Rosea	Silk tree	<i>Leguminosae</i>	
26	<i>Plumbago auriculata</i>		Plumbago, Cape Leadwort	<i>Plumbaginaceae</i>	
27	<i>Euonymus japonicus</i>	sp / argenteovariegatus	Euonymus	<i>Celastraceae</i>	
28	<i>Phoenix canariensis</i>		Canary Island date palm	<i>Arecaceae</i>	
29	<i>Magnolia denudata</i>	Yellow River	Yulan	<i>Magnoliaceae</i>	
30	<i>Magnolia x</i>	Red As		<i>Magnoliaceae</i>	



No	Genus	Cultivar/varieties	Common name	Family
31	<i>Magnolia x</i>	Vulcan		Magnoliaceae
32	<i>Magnolia x</i>	Serene		Magnoliaceae
33	<i>Magnolia x</i>	Burgundy Star		Magnoliaceae
34	<i>Magnolia x</i>	Yellow Bird		Magnoliaceae
35	<i>Magnolia x</i>	Advance		Magnoliaceae
36	<i>Magnolia x</i>	Purple Sensation		Magnoliaceae
37	<i>Ginkgo biloba</i>		Maidenhair tree	Ginkgoaceae
38	<i>Magnolia x</i>			Magnoliaceae
39	<i>Juglans regia</i>		English walnut	Juglandaceae
40	<i>Citrus sinensis</i>		Sweet Orange	Rutaceae
41	<i>Eucalyptus globulus</i>		Tasmanian blue gum, Blue Gum	Myrtaceae
42	<i>Quercus robur</i>		English oak	Fagaceae
43	<i>Pinus pinea</i>		Stone pine	Pinaceae
44	<i>Castanea x coudersii</i>			Fagaceae
45	<i>Quercus suber</i>		Cork oak	Fagaceae
46	<i>Banksia serrata</i>		Saw banksia, Old man banksia	Proteaceae
47	<i>Pyrus communis</i>		Wild pear	Rosaceae
48	<i>Justicia carnea</i>		Flamingo plant, Plume plant, Jacobinia	Acanthaceae
49	<i>Cupressus sempervirens</i>	sp / stricta	Italian cypress	Cupressaceae
50	<i>Araucaria heterophylla</i> (Syn. <i>Araucaria excelsa</i> )		Norfolk Island pine	Araucariaceae
51	<i>Acca sellowiana</i>		Pineapple guava	Myrtaceae
52	<i>Liriodendron tulipifera</i>		Tulip tree	Magnoliaceae
53	<i>Podocarpus macrophyllus</i>		Yew plum pine	Podocarpaceae
54	<i>Maytenus boaria</i>		Mayten tree	Celastraceae
55	<i>Cercis siliquastrum</i>		Judas tree	Leguminosae
56	<i>Paulownia tomentosa</i>		Foxglove tree, Princess tree	Scrophulariaceae
57	<i>Cinnamomum camphora</i>		Camphor tree	Lauraceae
58	<i>Magnolia stellata</i>		Star magnolia	Magnoliaceae
59	<i>Litchi chinensis</i>		Lychee	Sapindaceae
60	<i>Citrus aurantifolia</i>		Lime	Rutaceae
61	<i>Trachycarpus fortunei</i>		Windmill palm	Arecaceae
62	<i>Magnolia virginiana</i>		Sweet bay magnolia	Magnoliaceae
63	<i>Grevillea robusta</i>		Silk oak	Proteaceae
64	<i>Catalpa bignonioides</i>		Catalpa	Bignoniaceae
65	<i>Betula pubescens</i>		Downy birch	Betulaceae
66	<i>Cornus florida</i>	White Spring / Cherokee Chief	Flowering dogwood	Cornaceae
67	<i>Cornus capitata</i>		Evergreen dogwood	Cornaceae



No	Genus	Cultivar/varieties	Common name	Family
68	<i>Styphnolobium japonicum</i> (Syn. <i>Sophora japonica</i> )	<i>pendulum</i>	Japanese pagoda tree	Leguminosae
69	<i>Chamaecyparis pisifera</i>	<i>f. plumosa</i> / <i>f. squarrosa</i>	Sawara cypress	Cupressaceae
70	<i>Picea abies</i>		Norway spruce	Pinaceae
71	<i>Prunus serrulata</i>		Japanese flowering cherry	Rosaceae
72	<i>Prunus laurocerasus</i>		Cherry laurel	Rosaceae
73	<i>Prunus cerasifera</i>	<i>nigra</i>	Cherry plum	Rosaceae
74	<i>Cedrus deodara</i>		Deodar cedar	Pinaceae
75	<i>Syagrus romanzoffiana</i>		Cocos palm	Arecaceae
76	<i>Banksia ericifolia</i>		Heath-leaved Banksia	Proteaceae
77	<i>Bignonia</i> sp.			Bignoniaceae
78	<i>Banksia integrifolia</i>		Coast Banksia	Proteaceae
79	<i>Cedrus atlantica</i>	<i>glauca</i> / <i>glauca pendula</i> / <i>aurea</i>	Atlas cedar, Blue atlas cedar	Pinaceae
80	<i>Cedrus libani</i>	sp / <i>nana</i>	Cedar of Lebanon	Pinaceae
81	<i>Magnolia liliiflora</i>	<i>nigra</i>	Mu-lan	Magnoliaceae
82	<i>Quercus rubra</i>		Red oak	Fagaceae
83	<i>Prunus avium</i>		Bird cherry	Rosaceae
84	<i>Phytolacca dioica</i>		Ombú, Bella sombra	Phytolaccaceae
85	<i>Melia azedarach</i>		Chinaberry, Persian lilac	Meliaceae
86	<i>Grevillea rosmarinifolia</i>		Rosemary Spider Flower	Proteaceae
87	<i>Picea pungens</i>	<i>glauca globosa</i>	Colorado spruce	Pinaceae
88	<i>Banksia spinulosa</i>	Birthday candles	Hairpin Banksia	Proteaceae
89	<i>Taxodium distichum</i>		Bald cypress	Cupressaceae
90	<i>Picea glauca</i>	<i>cónica</i>	White spruce	Pinaceae
91	<i>Callistemon</i> spp.			Myrtaceae
92	<i>Pittosporum undulatum</i>		Orange pittosporum, Orange-berry pittosporum	Pittosporaceae
93	<i>Metrosideros excelsa</i>		Pohutukawa, New Zealand Christmas tree	Myrtaceae
94	<i>Jacaranda mimosifolia</i>		Jaranda, Black poui	Bignoniaceae
95	<i>Cordyline australis</i>	sp / <i>purpurea</i>	Cabbage tree	Agavaceae
96	<i>Erythrina crista-galli</i>		Brazilian coral tree, Cry-baby tree	Leguminosae
97	<i>Cydonia oblonga</i>		Quince	Rosaceae
98	<i>Eriobotrya japonica</i>		Loquat	Rosaceae
99	<i>Taxus baccata</i>	sp / <i>fastigiata</i>	English yew	Taxaceae



No	Genus	Cultivar/varieties	Common name	Family
100	<i>Magnolia grandiflora</i>	sp / Goliath	Southern magnolia	Magnoliaceae
101	<i>Cryptomeria japonica</i>	sp / <i>f. elegans</i>	Japanese cedar	Cupressaceae
102	<i>Aesculus hippocastanum</i>		Horse chestnut	Hippocastanaceae
103	<i>Pinus canariensis</i>		Canary Island pine	Pinaceae
104	<i>Araucaria angustifolia</i>		Parana pine	Araucariaceae
105	<i>Chamaecyparis lawsoniana</i>		Lawson's cypress	Cupressaceae
106	<i>Thuja plicata</i>	Zebrina	Western red cedar	Cupressaceae
107	<i>Acacia melanoxylon</i>		Australian blackwood	Leguminosae
108	<i>Cycas revoluta</i>		Sago palm	Cycadaceae
109	<i>Washingtonia robusta</i>		Washington palm, Mexican fan palm	Arecaceae
110	<i>Plumeria rubra</i>		Frangipani, Templetree	Apocynaceae
111	<i>Aucuba japonica</i>	Crotonifolia	Spotted laurel	Aucubaceae
112	<i>Arbutus unedo</i>		Strawberry tree	Ericaceae
113	<i>Citrus reticulata</i>		Mandarin orange	Rutaceae
114	<i>Brachychiton populneus</i>		Kurrajong bottle tree	Sterculiaceae
115	<i>Diospyros kaki</i>		Kaki	Ebenaceae
116	<i>Citrus paradisi</i>		Grapefruit	Rutaceae
117	<i>Actinidia deliciosa</i>	Hayward	Kiwifruit	Actinidiaceae
118	<i>Ficus carica</i>		Edible fig	Moraceae
119	<i>Platanus x acerifolia</i>		London plane tree, Hybrid plane	Platanaceae
120	<i>Buxus sempervirens</i>		Common box	Buxaceae
121	<i>Tibouchina urvilleana</i>		Princess flower	Melastomataceae
122	<i>Rhododendron sp.</i>		Rhododendron	Ericaceae
123	<i>Vesalea floribunda</i> (Syn. <i>Abelia floribunda</i> )		Mexican Abelia	Caprifoliaceae
124	<i>Abies nordmanniana</i>		Caucasian fir	Pinaceae
125	<i>Abies pinsapo</i>		Spanish fir	Pinaceae
126	<i>Abutilon x hybridum</i>		Abutilon	Malvaceae
127	<i>Acer platanoides</i>	Crimson King	Norway maple	Sapindaceae
128	<i>Alnus glutinosa</i>		European alder	Betulaceae
129	<i>Alcea rosea</i>		Hollyhock	Malvaceae
130	<i>Araucaria araucana</i>		Monkey-puzzle tree	Araucariaceae
131	<i>Arum maculatum</i>		Cuckoopint, Arum Lily	Araceae
132	<i>Atropa belladonna</i>		Deadly nightshade	Solanaceae
133	<i>Phyllostachys aurea</i>		Golden bamboo	Poaceae
134	<i>Buddleja davidii</i>	sp / Buzz Pink Purple	Butterfly bush	Scrophulariaceae
135	<i>Campsis radicans</i>		Trumpetcreper	Bignoniaceae



No	Genus	Cultivar/varieties	Common name	Family
136	<i>Cephalotaxus harringtonii</i>		Japanese plum yew	Taxaceae
137	<i>Chaenomeles x superba</i>		Flowering quince, Dwarf quince	Rosaceae
138	<i>Chelidonium majus</i>		Greater celandine	Papaveraceae
139	<i>Cyperus papyrus</i>		Papyrus	Cyperaceae
140	<i>Citrus x aurantium</i>		Bitter orange	Rutaceae
141	<i>Citrus limon</i>		Lemon	Rutaceae
142	<i>Cornus alba</i>		Red-barked dogwood, White dogwood	Cornaceae
143	<i>Cordyline banksii</i>		Forest Cabbage Tree	Asparagaceae
144	<i>Corylus avellana</i>		Hazel	Betulaceae
145	<i>Cymbidium x</i>		Cymbidium	Orchidaceae
146	<i>Cupressus x leylandii</i>		Leyland cypress	Cupressaceae
147	<i>Cupressus lusitanica</i>		Mexican cypress	Cupressaceae
148	<i>Cupressus macrocarpa</i>	<i>fastigiata</i> / Goldcrest	Monterey cypress	Cupressaceae
149	<i>Dahlia x hortensis</i>		Dahlia	Compositae
150	<i>Daphne odora</i>		Winter daphne	Thymelaeaceae
151	<i>Datura sp.</i>			Solanaceae
152	<i>Eucalyptus piperita</i>		Sydney peppermint, Urn-fruited peppermint	Myrtaceae
153	<i>Fragaria vesca</i>		Wild strawberry	Rosaceae
154	<i>Fragaria x ananassa</i>		Strawberry	Rosaceae
155	<i>Fuchsia x</i>		Fuchsia	Onagraceae
156	<i>Gardenia jasminoides</i>		Gardenia	Rubiaceae
157	<i>Veronica speciosa</i> (Syn. <i>Hebe speciosa</i> )		Veronica	Plantaginaceae
158	<i>Balantium antarcticum</i> (Syn. <i>Dicksonia antarctica</i> )		Soft tree fern	Dicksoniaceae
159	<i>Hedera helix</i>		English ivy	Araliaceae
160	<i>Hibiscus rosa-sinensis</i>		Chinese hibiscus	Malvaceae
161	<i>Hydrangea macrophylla</i>		Bigleaf hydrangea	Hydrangeaceae
162	<i>Ilex aquifolium</i>	sp / <i>argenteomarginata</i>	English holly	Aquifoliaceae
163	<i>Jasminum fruticans</i>		Yellow jasmin	Oleaceae
164	<i>Juniperus chinensis</i>	<i>stricta</i>	Chinese juniper	Cupressaceae
165	<i>Juniperus communis</i>	<i>compressa</i>	Common juniper	Cupressaceae
166	<i>Juniperus rigida</i>	<i>conferta</i>	Needle juniper	Cupressaceae
167	<i>Laburnum anagyroides</i>		Common laburnum	Leguminosae
168	<i>Lagunaria patersonia</i>		Norfolk Island hibiscus	Malvaceae



No	Genus	Cultivar/varieties	Common name	Family
169	<i>Larix decidua</i>		European larch	Pinaceae
170	<i>Latania lontaroides</i>		Red latan palm	Arecaceae
171	<i>Lavandula angustifolia</i>		English lavender	Lamiaceae
172	<i>Leptospermum polygalifolium</i>		Tantoon, Yellow tea tree	Myrtaceae
173	<i>Calocedrus decurrens</i>		Incense cedar	Cupressaceae
174	<i>Lonicera ligustrina</i>	<i>yunnanensis</i>	Honeysuckle	Caprifoliaceae
175	<i>Magnolia × soulangeana</i>	Black tulip / JURmag1	Saucer magnolia	Magnoliaceae
176	<i>Berberis aquifolium</i> (Syn. <i>Mahonia aquifolium</i> )		Holly-leaved barberry	Berberidaceae
177	<i>Malus domestica</i>		Apple	Rosaceae
178	<i>Melaleuca armillaris</i>		Bracelet Honey Myrtle	Myrtaceae
179	<i>Melissa officinalis</i>		Lemon balm	Lamiaceae
180	<i>Mentha × piperita</i>		Peppermint	Lamiaceae
181	<i>Metasequoia glyptostroboides</i>		Dawn redwood	Cupressaceae
182	<i>Mimosa pudica</i>		Sensitive plant	Leguminosae
183	<i>Morus alba</i>	<i>pendula</i>	White mulberry	Moraceae
184	<i>Morus nigra</i>		Black mulberry tree	Moraceae
185	<i>Nandina domestica</i>		Sacred bamboo	Berberidaceae
186	<i>Narcissus sp.</i>		Narcissus	Amaryllidaceae
187	<i>Nepeta cataria</i>		Catnip	Lamiaceae
188	<i>Nerium oleander</i>		Oleander	Apocynaceae
189	<i>Origanum vulgare</i>		Oregano	Lamiaceae
190	<i>Phoenix dactylifera</i>		Date palm	Arecaceae
191	<i>Petroselinum crispum</i>		Parsley	Apiaceae
192	<i>Pinus cembra</i>		Swiss stone pine	Pinaceae
193	<i>Larix griffithii</i>		Sikkim larch, East Himalayan larch	Pinaceae
194	<i>Pinus nigra</i>		Austrian pine	Pinaceae
195	<i>Pinus pinaster</i>		Maritime pine	Pinaceae
196	<i>Caesalpinia gilliesii</i>		Poinciana	Leguminosae
197	<i>Protea spp.</i>		Protea	Proteaceae
198	<i>Pteridium aquilinum</i>		Bracken	Dennstaedtiaceae
199	<i>Pyracantha angustifolia</i>		Narrowleaf firethorn	Rosaceae
200	<i>Rhus typhina</i>	Laciniata	Staghorn sumac	Anacardiaceae
201	<i>Robinia pseudoacacia</i>		Black locust	Leguminosae
202	<i>Rosa spp.</i>		Rose	Rosaceae
203	<i>Rosmarinus officinalis</i>		Rosemary	Lamiaceae
204	<i>Rubus idaeus</i>		Raspberry	Rosaceae
205	<i>Ruta graveolens</i>		Rue	Rutaceae



No	Genus	Cultivar/varieties	Common name	Family
206	<i>Salvia fulgens</i>		Cardinal Sage, Mexican Red Sage	Lamiaceae
207	<i>Sequoia sempervirens</i>		Coast redwood, California redwood	Cupressaceae
208	<i>Strelitzia reginae</i>		Bird of paradise	Strelitziaceae
209	<i>Tamarix africana</i>		African tamarisk	Tamaricaceae
210	<i>Thymus spp.</i>		Thyme	Lamiaceae
211	<i>Tulipa spp.</i>		Tulip	Liliaceae
212	<i>Vaccinium myrtillus</i>		Blueberry	Ericaceae
213	<i>Valeriana officinalis</i>		Garden heliotrope	Caprifoliaceae
214	<i>Vitis vinifera</i>	Albariño	Common grape	Vitaceae
215	<i>Wisteria sinensis</i>		Chinese wisteria	Leguminosae
216	<i>Yucca gloriosa</i>	var. <i>tristis</i>	Spanish dagger	Asparagaceae
217	<i>Zingiber officinale</i>		Common ginger	Zingiberaceae
218	<i>Leucospermum x</i>	Carnival Orange / Carnival Red		Proteaceae
219	<i>Abelia x grandiflora</i>		Glossy abelia	Caprifoliaceae
220	<i>Abutilon megapotamicum</i>		Trailing Abutilon	Malvaceae
221	<i>Acacia dealbata</i>		Silver wattle	Leguminosae
222	<i>Acanthus mollis</i>		Bear's breeches	Acanthaceae
223	<i>Acer pseudoplatanus</i>		Sycamore maple	Sapindaceae
224	<i>Aesculus x carnea</i>		Red horse chestnut	Sapindaceae
225	<i>Agapanthus praecox</i>		African-lily, Blue lily	Amaryllidaceae
226	<i>Aloysia citriodora</i>		Lemon verbena	Verbenaceae
227	<i>Alstroemeria x</i>			Alstroemeriaceae
228	<i>Argyranthemum frutescens</i>		Cobbitty daisy	Compositae
229	<i>Artemisia absinthium</i>		Wormwood	Compositae
230	<i>Asparagus setaceus</i>		Asparagus fern	Asparagaceae
231	<i>Bergenia x schmidtii</i>		Elephants' ears, Pigsqueak	Saxifragaceae
232	<i>Bougainvillea glabra</i>		Bougainvillea	Nyctaginaceae
233	<i>Brugmansia suaveolens</i>		Maikoa	Solanaceae
234	<i>Brugmansia x candida</i>		Angel's trumpet	Solanaceae
235	<i>Brunfelsia pauciflora</i>		Yesterday today and tomorrow	Solanaceae
236	<i>Callistemon linearis</i>		Narrow-leaved Bottlebrush	Myrtaceae
237	<i>Callistemon pallidus</i>		Lemon bottlebrush	Myrtaceae
238	<i>Callistemon rigidus</i>		Stiff bottlebrush	Myrtaceae
239	<i>Callistemon sieberi</i>		River Bottlebrush	Myrtaceae
240	<i>Canna indica</i>		Canna lilly	Cannaceae
241	<i>Canna x generalis</i>		Canna	Cannaceae





No	Genus	Cultivar/varieties	Common name	Family
242	<i>Cestrum nocturnum</i>		Night-blooming Jasmine, Night jessamine	Solanaceae
243	<i>Chamaecyparis obtusa</i>	Nana Gracilis	Hinoki cypress	Cupressaceae
244	<i>Chlorophytum comosum</i>	Vittatum	Spider plant	Asparagaceae
245	<i>Citrus australasica</i>		Finger lime	Rutaceae
246	<i>Citrus medica</i>	Digitata	Citron	Rutaceae
247	<i>Clivia miniata</i>		Natal lily	Amaryllidaceae
248	<i>Corymbia calophylla x ficifolia</i>			Myrtaceae
249	<i>Corymbia ficifolia</i> (Syn. <i>Eucalyptus ficifolia</i> )		Red-flowering gum	Myrtaceae
250	<i>Cotoneaster franchetii</i>		Cotoneaster	Rosaceae
251	<i>Cotoneaster salicifolius</i>		Willowleaf Cotoneaster	Rosaceae
252	<i>Cotoneaster turbinatus</i>			Rosaceae
253	<i>Crassula multicava</i>		Fairy Crassula	Crassulaceae
254	<i>Crocsmia x crocosmiiflora</i>		Crocsmia	Iridaceae
255	<i>Cyperus involucratus</i>		Umbrella plant	Cyperaceae
256	<i>Deutzia crenata</i>	Flore Pleno	Crenate Deutzia, Pride of Rochester	Hydrangeaceae
257	<i>Echium candicans</i>		Pride of Madeira	Boraginaceae
258	<i>Eichhornia crassipes</i>		Common water hyacinth	Pontederiaceae
259	<i>Elaeagnus pungens</i>	Maculata	Thorny olive	Elaeagnaceae
260	<i>Elaeagnus umbellata</i>		Autumn olive	Elaeagnaceae
261	<i>Escallonia rubra</i>		Redclaws, Red escallonia	Escalloniaceae
262	<i>Fascicularia bicolor</i>		Crimson bromeliad	Bromeliaceae
263	<i>Fatsia japonica</i>		Glossy-leaved paper plant	Araliaceae
264	<i>Gasteria carinata</i>		Bredasdorp gasteria, Keeled gasteria	Xanthorrhoeaceae
265	<i>Grevillea x</i>	Canberra Gem		Proteaceae
266	<i>Griselinia lucida</i>		Akapuka, Shining broadleaf	Cornaceae
267	<i>Gunnera manicata</i>		Giant rhubarb	Gunneraceae
268	<i>Hedera hibernica</i>		Atlantic Ivy	Araliaceae
269	<i>Hedychium gardnerianum</i>		Ginger lily, Yellow ginger lily	Zingiberaceae
270	<i>Hibiscus syriacus</i>		Rose of Sharon	Malvaceae
271	<i>Hydrangea paniculata</i>		Panicle hydrangea	Hydrangeaceae
272	<i>Ilex x altaclerensis</i>	Golden King	Holly	Aquifoliaceae
273	<i>Ilex x meserveae</i>		Blue holly	Aquifoliaceae



No	Genus	Cultivar/varieties	Common name	Family
274	<i>Impatiens balfourii</i>		Balfour's touch-me-not, Kashmir balsam	Balsaminaceae
275	<i>Jasminum beesianum</i>		Beesianum jasmine	Oleaceae
276	<i>Jasminum mesnyi</i>		Primrose jasmine, Chinese jasmine	Oleaceae
277	<i>Jasminum polyanthum</i>		Winter jasmine, Chinese jasmine	Oleaceae
278	<i>Juniperus oxycedrus</i>		Common juniper, Dwarf juniper	Cupressaceae
279	<i>Juniperus squamata</i>	Meyeri	Himalayan juniper	Cupressaceae
280	<i>Kerria japonica</i>	Pleniflora	Bachelor's Button, Japanese rose, Japanese Kerria	Rosaceae
281	<i>Kunzea baxteri</i> (Syn. <i>Callistemon hainesii</i> )		Scarlet kunzea	Myrtaceae
282	<i>Lantana x strigocamara</i>		Spanish flag	Verbenaceae
283	<i>Lavandula x heterophylla</i>		Sweet lavender	Lamiaceae
284	<i>Ligustrum lucidum</i>		Chinese privet, Glossy privet	Oleaceae
285	<i>Ligustrum ovalifolium</i>		California privet	Oleaceae
286	<i>Lonicera japonica</i>		Japanese honeysuckle	Caprifoliaceae
287	<i>Magnolia figo</i> (Syn. <i>Michelia figo</i> )		Banana Shrub	Magnoliaceae
288	<i>Magnolia maudiae</i>		Winter magnolia	Magnoliaceae
289	<i>Magnolia x</i>	Ians Red	Magnolia Ian's Red	Magnoliaceae
290	<i>Magnolia x</i>	J.C. Williams	Magnolia J.C. Williams	Magnoliaceae
291	<i>Magnolia x</i>	Felix Jury	Magnolia Felix Jury	Magnoliaceae
292	<i>Magnolia x</i>	JURmag2	Magnolia JURmag3	Magnoliaceae
293	<i>Magnolia x</i>	JURmag4	Magnolia JURmag5	Magnoliaceae
294	<i>Magnolia x</i>	Honey tulip	Magnolia Honey tulip	Magnoliaceae
295	<i>Magnolia x</i>	JURmag5	Magnolia JURmag6	Magnoliaceae
296	<i>Magnolia x</i>	Red as Red	Magnolia Red as Red	Magnoliaceae
297	<i>Magnolia x</i>	Sunsation	Magnolia Sunsation	Magnoliaceae
298	<i>Magnolia x loebneri</i>	Leonard Messel	Magnolia Leonard Messel	Magnoliaceae
299	<i>Mahonia bealei</i>		Beal's mahonia	Berberidaceae
300	<i>Mimetes cucullatus</i>	Crackerjack Red	Common pagoda	Proteaceae
301	<i>Monstera deliciosa</i>		Windowleaf, Monstera, Mexican breadfruit	Araceae
302	<i>Musa basjoo</i>		Japanese banana	Musaceae
303	<i>Myoporum laetum</i>		Ngaio tree	Scrophulariaceae



No	Genus	Cultivar/varieties	Common name	Family
304	<i>Myriophyllum spicatum</i>		Eurasian watermilfoil	Haloragaceae
305	<i>Nymphaea x</i>		Water lily	Nymphaeaceae
306	<i>Nyssa sylvatica</i>		Tupelo, Black gum tree	Cornaceae
307	<i>Opuntia ficus-indica</i>		Prickly pear cactus	Cactaceae
308	<i>Opuntia monacantha</i>	f. monstruosa Variegata	Drooping prickly pear, Sweet prickly pear	Cactaceae
309	<i>Osmanthus yunnanensis</i>		Osmanthus	Oleaceae
310	<i>Paeonia x suffruticosa</i>		Tree Peony	Paeoniaceae
311	<i>Pandorea jasminoides</i>		Bower of beauty, Bower vine, Bower climber	Bignoniaceae
312	<i>Parthenocissus quinquefolia</i>		Virginia creeper	Vitaceae
313	<i>Philadelphus coronarius</i>		Sweet mock orange	Hydrangeaceae
314	<i>Eriostemon myoporoides</i> (Syn. <i>Philotheca myoporoides</i> )		Long-leaf Waxflower	Rutaceae
315	<i>Phormium tenax</i>		New Zealand flax	Xanthorrhoeaceae
316	<i>Photinia x fraseri</i>		Red Tip Photinia	Rosaceae
317	<i>Physalis peruviana</i>		Cape gooseberry, Goldenberry	Solanaceae
318	<i>Pinus devoniana</i>		Michoacan pine, Ocote gretado	Pinaceae
319	<i>Pittosporum tobira</i>		Japanese pittosporum	Pittosporaceae
320	<i>Plectranthus madagascariensis</i>	Variegated Mintleaf	Variegated Mintleaf, Candle plant	Lamiaceae
321	<i>Podocarpus cunninghamii</i>		Montane totara	Podocarpaceae
322	<i>Podranea ricasoliana</i>		Port St. Johns Creeper, Zimbabwe-creeper	Bignoniaceae
323	<i>Populus alba</i>	Pyramidalis	White poplar, Silver poplar	Salicaceae
324	<i>Populus nigra</i>	Italica	Black poplar	Salicaceae
325	<i>Populus x canescens</i>		Grey poplar	Salicaceae
326	<i>Prostanthera rotundifolia</i>		Australian mint bush	Lamiaceae
327	<i>Protea cynaroides</i>		King protea	Proteaceae
328	<i>Protea x</i>	Sylvia	Protea	Proteaceae
329	<i>Psidium cattleianum</i>		Strawberry guava	Myrtaceae
330	<i>Pyracantha fortuneana</i>		Chinese firethorn	Rosaceae
331	<i>Pyrus calleryana</i>	Bradford	Callery pear	Rosaceae
332	<i>Quercus pyrenaica</i>		Pyrenean oak	Fagaceae
333	<i>Radermachera sinica</i>		China doll, Serpent tree	Bignoniaceae



No	Genus	Cultivar/varieties	Common name	Family
334	<i>Rhododendron degronianum</i>	subs. yakushmanum		<i>Ericaceae</i>
335	<i>Rhododendron ponticum</i>		Pontic rhododendron	<i>Ericaceae</i>
336	<i>Rhododendron x</i>			<i>Ericaceae</i>
337	<i>Rhus glabra</i>		Smooth Suma	<i>Anacardiaceae</i>
338	<i>Robinia x ambigua</i>	Flemor		<i>Leguminosae</i>
339	<i>Rosa banksiae</i>	Alba	Banksian rose	<i>Rosaceae</i>
340	<i>Salvia nemorosa</i>		Woodland Sage	<i>Lamiaceae</i>
341	<i>Santolina chamaecyparissus</i>		Lavender cotton, Gray santolina	<i>Compositae</i>
342	<i>Sauromatum venosum</i>		Voodoo Lily, Corpseflower	<i>Araceae</i>
343	<i>Schefflera arboricola</i>		Dwarf Umbrella Tree	<i>Araliaceae</i>
344	<i>Serruria x (florida x rosea)</i>	Carmen		<i>Proteaceae</i>
345	<i>Solanum laxum</i>		Potato vine	<i>Solanaceae</i>
346	<i>Spiraea cantoniensis</i>		Bridal-wreath spirea, Reeves spirea	<i>Rosaceae</i>
347	<i>Spiraea japonica</i>		Japanese meadowsweet, Japanese spiraea	<i>Rosaceae</i>
348	<i>Spiraea thunbergii</i>		Baby's breath spirea, Thunberg spirea	<i>Rosaceae</i>
349	<i>Strelitzia nicolai</i>		Giant bird-of- paradise	<i>Strelitziaceae</i>
350	<i>Syringa vulgaris</i>		Common lilac	<i>Oleaceae</i>
351	<i>Syzygium paniculatum</i>		Australian jamboree, Brush cherry	<i>Myrtaceae</i>
352	<i>Tecoma capensis</i>		Cape honeysuckle	<i>Bignoniaceae</i>
353	<i>Thuja occidentalis</i>	Rheingold / Teddy	Northern white- cedar	<i>Cupressaceae</i>
354	<i>Tilia platyphyllos</i>		Broad-leaved linden	<i>Malvaceae</i>
355	<i>Trachelospermum jasminoides</i>		Confederate jasmine	<i>Apocynaceae</i>
356	<i>Viburnum odoratissimum</i>		Sweet viburnum	<i>Adoxaceae</i>
357	<i>Viburnum tinus</i>	Eve Price	Laurustinus	<i>Adoxaceae</i>
358	<i>Vinca difformis</i>		Periwinkle	<i>Apocynaceae</i>
359	<i>Wisteria x formosa</i>		Formosa Wisteria	<i>Leguminosae</i>
360	<i>Yucca gigantea</i>		Giant Yucca	<i>Asparagaceae</i>
361	<i>Magnolia x</i>	Cleopatra		<i>Magnoliaceae</i>



## Annexe C. List of camellias.

Register of camellia species and cultivars growing at Quinteiro da Cruz. The code and some names can be located at the maps.

No.	Specie	Cultivar	Location	
1	<i>C. japonica</i>	Pope John XXIII	Victoriano Piñeiro Walk	
2	<i>C. japonica</i>	Cidade de Vigo	Victoriano Piñeiro Walk/ Swimming Pool Area	
3	<i>C. japonica</i>	Virgin's Blush	Victoriano Piñeiro Walk/ Wood of Words	
4	<i>C.x williamsii</i>	Buttons'n Bows	Victoriano Piñeiro Walk/ Behind Granary	
5	<i>C. japonica</i>	Shiro Chan	Victoriano Piñeiro Walk/ Swimming Pool Area	
6	<i>C. sinensis var. assamica</i>		Victoriano Piñeiro Walk/ Tea Plantation	
7	<i>C. japonica</i>	Lavinia Maggi	Victoriano Piñeiro Walk	
8	<i>C. japonica</i>	Antonio Bernardo Ferreira	Victoriano Piñeiro Walk	
9	<i>C. japonica</i>	Angelina Vieira	Victoriano Piñeiro Walk	
10	<i>C. japonica</i>	Tama-vino	Victoriano Piñeiro Walk	
11	<i>C. japonica</i>	Snowman	Victoriano Piñeiro Walk/ Winery	
12	<i>C. reticulata hybrid</i>	Victoriano Piñeiro	Victoriano Piñeiro Walk	
13	<i>C. reticulata</i>	Songzilin (Pagoda/ Robert Fortune)	Victoriano Piñeiro Walk/ Swimming Pool Area	
14	<i>C. japonica</i>	Vilar d' Allen	Victoriano Piñeiro Walk/ Behind Granary	
15	<i>C. japonica</i>	Orandakô	Victoriano Piñ. Walk/ Swimming Pool Area	
16	<i>C. japonica</i>	Professor Sargent	Victoriano Piñeiro Walk/ Winery	
17	<i>C. japonica</i>	Moonlight Bay	Victoriano Piñeiro Walk	
18	<i>C. japonica</i>	Happy Higo	Victoriano Piñeiro Walk/ Behind Granary/ Pedrito Walk/ Games Area	
19	<i>C.x williamsii</i>	Coral Bouquet	Victoriano Piñeiro Walk	
20	<i>C. japonica</i>	Alba Delecta	Victoriano Piñeiro Walk	
21	<i>C. japonica</i>	Fátima	Victoriano Piñeiro Walk	
22	<i>C. japonica</i>	Maruxa Lago	Victoriano Piñeiro Walk	
23	<i>C. japonica</i>	Tama-no-ura	Victoriano Piñeiro Walk/ Pedrito Walk/ Behind Granary/ Wood of Words	
24	<i>C. japonica</i>	Madame Lourmand	Victoriano Piñeiro Walk/ Winery	
25	<i>C. reticulata hybrid</i>	Grand Jury	Victoriano Piñeiro Walk	
26	<i>C. hybrid</i>	Dr. Louis Polizzi	Victoriano Piñeiro Walk	
27	<i>C. japonica</i>	Elegans Splendor	Victoriano Piñeiro Walk	
28	<i>C.x vernalis</i>	Yuletide	Vict. Piñ. Walk/ Pedrito Walk/ Carlota Walk/ Tea Plantation/ Wood of Words	
29	<i>C. japonica</i>	Virginia Franco	Victoriano Piñeiro Walkm/ Ancient Garden/ Wood of Words	
30	<i>C. japonica</i>	Hagoromo	Victoriano Piñeiro Walk/ Tea Plantation	
31	<i>C. sasanqua</i>	Rosea	Victoriano Piñeiro Walk	
32	<i>C. japonica</i>	Nuccio's Jewel	Victoriano Piñeiro Walk/ Pedrito Walk/ Winery	



No.	Specie	Cultivar	Location	DEPUTACIÓN PONTEVEDRA
33	<i>C. japonica</i>	Thelma Dale	Victoriano Piñeiro Walk	
34	<i>C. japonica</i>	Doutor Balthazar de Mello	Victoriano Piñeiro Walk/ Ancient Garden/ Wood of Words	
35	<i>C. japonica</i>	Mrs. D.W. Davis	Victoriano Piñeiro Walk/ Ancient Garden/ Wood of Words/ Chapel Area	
36	<i>C. japonica</i>	Elegans	Victoriano Piñeiro Walk/ Swimming Pool Area	
37	<i>C. japonica</i>	Princesse Baciocchi	Victoriano Piñeiro Walk/ Behind Granary/ Swimming Pool Area	
38	<i>C. japonica</i>	Betty Foy Sanders	Victoriano Piñeiro Walk	
39	<i>C. japonica</i>	Kramer's Supreme	Victoriano Piñeiro Walk/ Tea Plantation/ Swimming Pool Area/ Ancient Garden	
40	<i>C. japonica</i>	Alba Simplex	Victoriano Piñeiro Walk	
41	<i>C. japonica</i>	L' Avvenire	Victoriano Piñeiro Walk	
42	<i>C.x williamsii</i>	Mary Phoebe Taylor	Carlota Walk/ Pedrito Walk/ Wood of Words	
43	<i>C. hybrid</i>	Minato-no-akebono	Carlota Walk	
44	<i>C. japonica</i>	Imbricata Alba	Carlota Walk/ Winery	
45	<i>C. japonica</i>	Drama Girl	Carlota Walk	
46	<i>C. rusticana</i>	Ai-no-izumi	Carlota Walk/ Behind Granary/ Tea Plantation/ Winery	
47	<i>C. japonica</i>	Roger Hall	Carlota Walk	
48	<i>C. japonica</i>	Dahlohnega	Carlota Walk/ Pedrito Walk/ Tea Plantation/ Wood of Words/ Chapel Area	
49	<i>C. japonica</i>	Tom Thumb	Carlota Walk	
50	<i>C.x williamsii</i>	China Clay	Carlota Walk/ Tea Plantation/ Ancient Garden/ Wood of Words	
51	<i>C. reticulata hybrid</i>	Bill Goertz	Carlota Walk	
52	<i>C. vernalis</i>	Egao	Carlota Walk/ Wood of Words	
53	<i>C. hybrid</i>	Scented Sun	Carlota Walk/ Behind Granary	
54	<i>C. japonica</i>	Tama Electra	Carlota Walk	
55	<i>C.x vernalis</i>	Star Above Star	Carlota Walk	
56	<i>C. japonica</i>	Elizabeth Hawkins	Carlota Walk	
57	<i>C.x vernalis</i>	Shibori-egao	Carlota Walk/ Behind Granary	
58	<i>C. sasanqua</i>	Asakura	Carlota Walk/ Chapel Area	
59	<i>C. japonica</i>	Borrazás	Carlota Walk	
60	<i>C. japonica</i>	Tama Beauty	Carlota Walk/ Tea Plantation	
61	<i>C. hybrid</i>	Cinnamon Scentsation	Carlota Walk	
62	<i>C. japonica</i>	Latifolia	Carlota Walk/ Swimming Pool Area	
63	<i>C. japonica</i>	Grace Albritton	Carlota Walk/ Swimming Pool Area	
64	<i>C. japonica</i>	L.T. Dees	Carlota Walk/ Ancient Garden	
65	<i>C.x williamsii</i>	Daintiness	Carlota Walk	
66	<i>C. japonica</i>	Kick-Off	Carlota Walk	
67	<i>C. Higo</i>	Higo-ôzeki	Carlota Walk/ Tea Plantation	



No.	Specie	Cultivar	Location	DEPUTACIÓN PONTEVEDRA
68	<i>C. japonica</i>	Albear	Carlota Walk	
69	<i>C. japonica</i>	Nobilissima	Carlota Walk	
70	<i>C.x williamsii</i>	Debbie	Carlota Walk/ Behind Granary/ Swimming Pool Area/ Winery/ Chapel Area	
71	<i>C. japonica</i>	R.L. Wheeler	Carlota Walk/ Wood of Words	
72	<i>C. japonica</i>	Padeira d'Aljubarrota	Carlota Walk	
73	<i>C. japonica</i>	Masterpiece	Carlota Walk	
74	<i>C. cuspidata hybrid</i>	Spring Festival	Carlota Walk/ Winery	
75	<i>C. reticulata hybrid</i>	Galeguiña	Carlota Walk	
76	<i>C. japonica</i>	Eximia	Carlota Walk	
77	<i>C. japonica</i>	Marques de Panasqueira	Carlota Walk	
78	<i>C. japonica</i>	Grandiflora Superba	Carlota Walk	
79	<i>C. japonica</i>	Anemoniflora	Carlota Walk	
80	<i>C. hiemalis</i>	Shikishima	Carlota Walk	
81	<i>C. hiemalis</i>	Kanjiro	Carlota Walk/ Chapel's Walk	
82	<i>C. sasanqua</i>	Crimson King	Carlota Walk	
83	<i>C. sasanqua</i>	Butler	Carlota Walk	
84	<i>C. sasanqua</i>	Hanajiman	Carlota Walk	
85	<i>C. sasanqua</i>	Autumn Sunrise	Carlota Walk	
86	<i>C. yuhsienensis hybrid</i>	Yume	Carlota Walk/ Chapel's Walk/ Winery	
87	<i>C. hybrid</i>	El Dorado	Pedrito Walk/ Winery	
88	<i>C. hybrid</i>	Barbara Clark	Pedrito Walk	
89	<i>C. japonica</i>	Rubescens Major	Pedrito Walk	
90	<i>C. nitidissima hybrid</i>	Golden Glow	Pedrito Walk	
91	<i>C. japonica</i>	Cherries Jubilee	Pedrito Walk	
92	<i>C. fluviatilis</i>		Behind Granary/ Tea Plantation/ Oriental Garden	
93	<i>C. japonica</i>	Hawaii	Pedrito Walk/ Tea Plantation/ Wood of Words	
94	<i>C. japonica</i>	Christmas Beauty	Pedrito Walk	
95	<i>C. japonica</i>	Kumagai	Pedrito Walk/ Behind Granary/ Winery	
96	<i>C. japonica</i>	Silver Cloud	Pedrito Walk/ Tea Plantation	
97	<i>C. hybrid</i>	Loki Schmitz	Pedrito Walk	
98	<i>C.x williamsii</i>	Donation	Pedrito Walk/ Winery	
99	<i>C. rusticana</i>	Reigyoku	Wood of Words/Oriental Garden	
100	<i>C. rusticana</i>	Otome	Pedrito Walk	
101	<i>C. japonica</i>	Mark Alan var.	Pedrito Walk	
102	<i>C. hybrid</i>	Night Rider	Pedrito Walk/ Winery	
103	<i>C. japonica</i>	Kifukurin-benten	Pedrito Walk	
104	<i>C. japonica</i>	Furô-an	Pedrito Walk	
105	<i>C. japonica</i>	California	Pedrito Walk	
106	<i>C. japonica</i>	Royal Velvet	Pedrito Walk/ Tea Plantation/ Ancient Garden/ Winery	



No.	Specie	Cultivar	Location	DEPUTACIÓN PONTEVEDRA
107	<i>C. japonica</i>	Pearl's Pet	Pedrito Walk	
108	<i>C. japonica</i>	Kimberley	Pedrito Walk/ Winery	
109	<i>C. japonica</i>	Nuccio's Gem	Behind Granary/ Winery / Chapel's Walk	
110	<i>C. japonica</i>	Mary J. Wheeler	Behind Granary	
111	<i>C. japonica</i>	Mathotiana Rosea	Behind Granary	
112	<i>C.x williamsii</i>	Elegant Beauty	Behind Granary	
113	<i>C. japonica</i>	Grand Prix	Behind Granary	
114	<i>C. japonica</i>	Bob Hope	Behind Granary/ Winery	
115	<i>C.x williamsii</i>	Dream Boat	Behind Granary	
116	<i>C.x williamsii</i>	Jubilation	Behind Granary	
117	<i>C. japonica</i>	Tama-hikari	Behind Granary	
118	<i>C. japonica</i>	Grand Slam	Behind Granary/ Chapel's Walk	
119	<i>C.x williamsii</i>	Ballet Queen	Ancient Garden/ Behind Granary/ Chapel's Walk	
120	<i>C. japonica</i>	The Czar	Behind Granary	
121	<i>C. japonica</i>	Jean Clere	Behind Granary	
122	<i>C. japonica</i>	Flame	Behind Granary	
123	<i>C. euphlebia</i>		Behind Granary	
124	<i>C.x williamsii</i>	Jury's Yellow	Behind Granary/ Ancient Garden	
125	<i>C. reticulata</i>	Pavlova	Behind Granary	
126	<i>C. japonica</i>	Blood of China	Behind Granary/ Swimming Pool Area/ Chapel's Walk	
127	<i>C. japonica</i>	Brushfield's Yellow	Behind Granary	
128	<i>C. fascicularis</i>		Behind Granary	
129		Moshio	Behind Granary	
130	<i>C. japonica</i>	Perfecta	Behind Granary	
131	<i>C. japonica</i>	Clark Hubbs	Behind Granary	
132	<i>C. reticulata hybrid</i>	White Retic	Wood of Words	
133	<i>C. japonica</i>	Mark Alan	Behind Granary/ Swimming Pool Area/ Chapel's Area	
134	<i>C.x williamsii</i>	Galaxie	Behind Granary/ Swimming Pool Area/ Ancient Garden	
135	<i>C. japonica</i>	Betty's Beauty	Behind Granary	
136	<i>C. japonica</i>	Cassandra	Behind Granary	
137	<i>C. edithae</i>	Jinqu	Behind Granary	
138	<i>C. changii</i>		Behind Granary/ Games Area	
139	<i>C. chrysanthoides</i>		Behind Granary/ Chapel's Walk	
140	<i>C. nitidissima</i>		Behind Granary/ Ancient Garden/ Chapel's Walk	
141	<i>C. hybrid</i>	Winter's Snowman	Behind Granary	
142	<i>C. oleifera hybrid</i>	Snow Flurry	Behind Granary	
143	<i>C. liberofilamenta</i>		Behind Granary	
144	<i>C. japonica</i>	Tama Americana	Behind Granary	
145	<i>C. miyagi</i>		Behind Granary/ Chapel's Walk	





No.	Specie	Cultivar	Location	DEPUTACIÓN PONTEVEDRA
146	<i>C. vietnamensis</i>		Behind Granary/ Games Area	
147	<i>C. Higo</i>	Jitsugetsusei	Wood of Words/ Games Area	
148	<i>C. tsaii</i>		Behind Granary/ Tea Plantation	
149	<i>C. irrawadiensis</i>		Behind Granary	
150	<i>C.x hiemalis</i>	Autumn Gold	Behind Granary	
151	<i>C. hybrid</i>	Kagirohi	Behind Granary	
152	<i>C. japonica</i>	Holly	Behind Granary	
153	<i>C. grigsii</i>	Zhenzhucha	Behind Granary	
154	<i>C. japonica</i>	Edwina Landger	Behind Granary	
155	<i>C. flava</i>		Behind Granary/ Ancient Garden	
156	<i>C. japonica</i>	Shuchûka	Behind Granary	
157	<i>C. cucphuongensis</i>		Behind Granary	
158	<i>C. japonica</i>	Kingyo-tsubaki	Behind Granary	
159	<i>C. impresissinervis</i>		Behind Granary	
160	<i>C. japonica</i>	Broceliande	Behind Granary	
161	<i>C. hybrid</i>	Kichô	Behind Granary	
162	<i>C. japonica</i>	Sweetheart	Behind Granary	
163	<i>C. reticulata hybrid</i>	Interval	Behind Granary/ Swimming Pool Area	
164	<i>C. japonica</i>	Maiden's Blush	Behind Granary	
165	<i>C. reticulata hybrid</i>	Valentine Day	Behind Granary/ Tea Plantation	
166	<i>C. japonica</i>	Ville de Nantes	Behind Granary/ Wood of Words/ Winery	
167	<i>C.x vernalis</i>	Egao Corkscrew	Behind Granary	
168	<i>C. japonica</i>	Alice Wood	Behind Granary/ Ancient Garden/ Wood of Words	
169	<i>C. kissii hybrid</i>	Buttermint	Behind Granary	
170	<i>C. japonica</i>	Bokuhan	Behind Granary	
171		Momoiro	Behind Granary	
172	<i>C. nitidissima hybrid</i>	Kogane-nishiki	Behind Granary	
173	<i>C. hybrid</i>	Cinnamon Cindy	Paseo Carlota/ Chapel Area	
174	<i>C. sasanqua</i>	Double Rainbow	Paseo Carlota	
175	<i>C. japonica</i>	Daikagura	Victoriano Piñeiro Walk/ Tea Plantation/ Ancient Garden	
176	<i>C. japonica</i>	Mrs D.W. Davis Descanso	Victoriano Piñeiro Walk	
177	<i>C. japonica</i>	Diane	Behind Granary	
178	<i>C. japonica</i>	Kujaku	Tea Plantation/ Winery	
179	<i>C. japonica</i>	Little Michael	Tea Plantation	
180	<i>C. japonica</i>	Reboreda	Tea Plantation	
181	<i>C. japonica</i>	Momoiro-bokuhan	Tea Plantation	
182	<i>C. reticulata</i>	Satsuma-kurenai	Tea Plantation	
183	<i>C. japonica</i>	Kuro-tsubaki	Tea Plantation	
184	<i>C. rusticana</i>	Kasugayama	Tea Plantation	
185	<i>C. hybrid</i>	Osyokum	Tea Plantation	



No.	Specie	Cultivar	Location	DEPUTACIÓN PONTEVEDRA
186	<i>C. japonica</i>	Madame Ambroise Verschaffelt	Tea Plantation	
187	<i>C. japonica</i>	Surpreza de J. Marques Loureiro	Tea Plantation	
188	<i>C. reticulata hybrid</i>	Ruta Hagmann	Games Area	
189	<i>C. salicifolia</i>		Games Area	
190	<i>C. japonica</i>	Red Leaf Bella	Games Area	
191	<i>C. japonica</i>	Sierra Spring	Tea Plantation	
192	<i>C. japonica</i>	Dom João IV	Tea Plantation	
193	<i>C. japonica</i>	Mercury	Tea Plantation	
194	<i>C. reticulata</i>	Frances Butiern	Games Area	
195	<i>C. hybrid</i>	High Fragrance	Games Area/ Ancient Garden/Oriental Garden	
196	<i>C. reticulata</i>	Miss Tulare	Games Area	
197	<i>C. reticulata hybrid</i>	Dream Girl	Games Area	
198	<i>C. reticulata hybrid</i>	Lila Naff	Games Area	
199	<i>C. reticulata hybrid</i>	Valley Knudsen	Games Area	
200	<i>C. reticulata hybrid</i>	Terrell Weaver	Games Area	
201	<i>C. reticulata</i>	La Stupenda	Games Area	
202	<i>C. reticulata hybrid</i>	Forty-Niner	Games Area	
203	<i>C. reticulata hybrid</i>	Arcadia	Games Area/ Wood of Words	
204	<i>C. japonica</i>	Grape Soda	Games Area	
205	<i>C. japonica</i>	Mont Blanc	Tea Plantation/ Swimming Pool Area	
206	<i>C. japonica</i>	Sanpei-tsubaki	Tea Plantation/ Winery	
207	<i>C. japonica</i>	Surusumi	Tea Plantation	
208	<i>C. sasanqua</i>	Dwarf Shishi	Tea Plantation	
209	<i>C. japonica</i>	Cup of beauty/ Taça de Fermosura	Tea Plantation	
210	<i>C. hybrid</i>	Paper Dolls	Tea Plantation	
211	<i>C. reticulata</i>	Emma Gaeta	Tea Plantation	
212	<i>C. hybrid</i>	Queen Bee	Tea Plantation	
213	<i>C. hybrid</i>	Moonrise	Tea Plantation	
214	<i>C. japonica</i>	Shikibu	Tea Plantation	
215	<i>C. hybrid</i>	Ki-no-senritsu	Behind Granary/ Ancient Garden	
216	<i>C. hybrid</i>	Scented Gem	Behind Granary	
217	<i>C. transnokoensis</i>		Behind Granary/ Wood of Words	
218	<i>C. taliensis</i>		Behind Granary	
219	<i>C. granthamiana</i>		Behind Granary/ Wood of Words	
220	<i>C. chekiangoleosa</i>		Behind Granary	
221	<i>C. yuhsienensis</i>		Behind Granary/ Ancient Garden	
222	<i>C. sasanqua</i>	Midnight Lover	Behind Granary	
223	<i>C. japonica</i>	Nokogiriba-tsubaki	Behind Granary	
224	<i>C. sasanqua</i>	Beatrice Emily	Behind Granary	



No.	Specie	Cultivar	Location	DEPUTACIÓN PONTEVEDRA
225	<i>C. sinensis</i> var. <i>sinensis</i>		Tea Plantation	
226	<i>C. sinensis</i>		Tea Plantation	
227	<i>C. Higo</i>	Daikanbô	Tea Plantation	
228	<i>C. Higo</i>	Gairinzan	Games Area	
229	<i>C. Higo</i>	Ôkan	Games Area	
230	<i>C. Higo</i>	Nishiki	Games Area	
231	<i>C. Higo</i>	Mikuni-no-homare	Games Area	
232	<i>C. Higo</i>	Imakumagai	Games Area	
233	<i>C. Higo</i>	Yamato-nishiki	Games Area	
234	<i>C. tuberculata</i>		Games Area	
235	<i>C. japonica</i>	Kramer's Beauty	Games Area	
236	<i>C. pitardii</i>		Games Area	
237	<i>C. japonica</i>	Haru-no-utena	Games Area	
238	<i>C. reticulata</i>	Red China	Games Area	
239	<i>C. reticulata</i> hybrid	Flower Girl	Games Area	
240	<i>C. reticulata</i> hybrid	Renee Land	Games Area	
241	<i>C. reticulata</i>	Jean Morel	Games Area	
242	<i>C. reticulata</i> hybrid	Randolph Maphis	Games Area	
243	<i>C. longicarpa</i>		Games Area	
244	<i>Camellia</i> sp		Games Area	
245	<i>C. fraterna</i>		Games Area	
246	<i>C. japonica</i>	Golden Lotus	Games Area	
247	<i>C. japonica</i>	Yuthianghi	Games Area	
248	<i>C. edithae</i>		Games Area	
249	<i>C. hybrid</i>	Carlota Piñeiro	Swiming Pool Area	
250	<i>C. sasanqua</i>	Rainbow	Tea Plantation/ Chapel Area	
251	<i>C. japonica</i>	Ave Maria	Tea Plantation	
252	<i>C. japonica</i>	Augusto Leal de Gouveia Pinto	Tea Plantation/ Chapel Area	
253	<i>C. x williamsii</i>	Coral Delight	Tea Plantation	
254	<i>C. japonica</i>	Man Size	Tea Plantation/ Swiming Pool Area/ Ancient Garden	
255	<i>C. x williamsii</i>	E.G. Waterhouse	Tea Plantation	
256	<i>C. hiemalis</i>	Chansonette	Tea Plantation	
257	<i>C. japonica</i>	Margaret Davis	Tea Plantation/ Ancient Garden/ Chapel Area	
258	<i>C. japonica</i>	Prince Eugene Napoleon	Swiming Pool Area	
259	<i>C. japonica</i>	Madame Victor de Bisschop Rubra	Swiming Pool Area	
260	<i>C. japonica</i>	Berenice Boddy	Swiming Pool Area	
261	<i>C. japonica</i>	Matilija Poppy	Swiming Pool Area/ Wood of Words	
262	<i>C. japonica</i>	Dona Jane Andresen	Swiming Pool Area/ Wood of Words	
263	<i>C. japonica</i>	Herzilia II	Swiming Pool Area	



No.	Specie	Cultivar	Location	DEPUTACIÓN PONTEVEDRA
264	<i>C. japonica</i>	Clotilde	Swiming Pool Area/ Wood of Words	
265	<i>C. japonica</i>	Adolphe Audusson var.	Swiming Pool Area	
266	<i>C. japonica</i>	Cardinal's Cap	Swiming Pool Area	
267	<i>C. japonica</i>	Chandleri	Swiming Pool Area/ Chapel Area	
268	<i>C. japonica</i>	Eugenia de Montijo	Swiming Pool Area	
269	<i>C. japonica</i>		Swiming Pool Area	
270	<i>C. japonica</i>	Il Cigno	Swiming Pool Area	
271	<i>C. reticulata hybrid</i>	Francie L.	Swiming Pool Area	
272	<i>C. japonica</i>	Pomponé	Zona 3	
273	<i>C. reticulata</i>	Captain Rawes	Swiming Pool Area/ Ancient Garden	
274	<i>C. japonica</i>	Collettii	Swiming Pool Area/ Ancient Garden	
275	<i>C. japonica</i>	Fimbriata	Swiming Pool Area/ Ancient Garden/ Wood of Words	
276	<i>C. reticulata</i>	Curtain Call	Swiming Pool Area/ Wood of Words	
277	<i>C. japonica</i>	General George Patton	Swiming Pool Area	
278	<i>C. japonica</i>	Giuseppe Traverso	Swiming Pool Area	
279	<i>C. japonica</i>	Alba Plena	Swiming Pool Area/ Ancient Garden/ Wood of Words	
280	<i>C. japonica</i>	Flamingo	Swiming Pool Area	
281	<i>C. hybrid</i>	Rosalía de Castro	Swiming Pool Area	
282	<i>C. japonica</i>	Gigantea	Swiming Pool Area/ Ancient Garden	
283	<i>C. wabisuke</i>	Shiro-wabisuke	Swiming Pool Area	
284	<i>C. japonica</i>	Gauntlettii	Ancient Garden	
285	<i>C. japonica</i>	Covina	Ancient Garden	
286	<i>C. reticulata hybrid</i>	Shanghai Lady	Ancient Garden	
287	<i>C. japonica</i>	Aka-sodekakushi	Ancient Garden	
288	<i>C. nitidissima var. microcarpa</i>		Ancient Garden/ Chapel Area	
289	<i>C. japonica</i>	Guilio Nuccio	Ancient Garden/ Winery	
290	<i>C. reticulata hybrid</i>	Lasca Beauty	Ancient Garden	
291	<i>C. japonica</i>	Maroon and Gold	Ancient Garden	
292	<i>C. rosmanii</i>		Ancient Garden	
293	<i>C. reticulata</i>	Juban (Chrysanthemum Petal)	Ancient Garden	
294	<i>C. amplexicaulis</i>		Ancient Garden	
295	<i>C. japonica</i>	Midnight	Ancient Garden	
296	<i>C. synaptica</i>		Wood of Words	
297	<i>C. hybrid</i>	Harold L. Paige	Ancient Garden	
298	<i>C. pubipetala</i>		Ancient Garden	
299	<i>C. reticulata</i>	Ming Temple	Ancient Garden	
300	<i>C. nitidissima</i>	Innominata	Ancient Garden	
301	<i>C. flavida</i>		Ancient Garden	
302	<i>C. japonica</i>	Betty Sheffield Supreme	Ancient Garden	



No.	Specie	Cultivar	Location	DEPUTACIÓN PONTEVEDRA
303	<i>C. reticulata</i>	San Marino	Ancient Garden	
304	<i>C. reticulata</i>	Mandalay Queen	Ancient Garden	
305	<i>C. reticulata</i>	Damano (Large Cornelian)	Ancient Garden	
306	<i>C. reticulata hybrid</i>	Black Lace	Ancient Garden	
307	<i>C. reticulata hybrid</i>	Dr Clifford Parks	Ancient Garden/ Wood of Words	
308	<i>C. hybrid</i>	Ki-no-jômanji	Ancient Garden	
309	<i>C. japonica</i>	Incarnata	Ancient Garden	
310	<i>C. japonica</i>	Jerry Donnan	Ancient Garden	
311	<i>C. hybrid</i>	Solstice	Ancient Garden	
312	<i>C. nitidissima</i>	Guana	Ancient Garden	
313	<i>C. grijsii</i>	Zhenzhu Cha	Ancient Garden	
314	<i>C. hybrid</i>	Ki-no-gozen	Ancient Garden	
315	<i>C. japonica</i>	Frosty Morn	Ancient Garden	
316	<i>C. hybrid</i>	Soyko	Ancient Garden	
317	<i>C. japonica</i>	Dr Tinsley	Ancient Garden	
318	<i>C. japonica</i>	Bella Romana	Ancient Garden	
319	<i>C. tunghinensis</i>		Ancient Garden	
320	<i>C. sasanqua</i>	Barão de Soutelinho	Ancient Garden/ Wood of Words	
321	<i>C. sasanqua</i>	Baronesa de Soutelinho	Ancient Garden/ Wood of Words	
322	<i>C. japonica</i>	Flowerwood	Wood of Words	
323	<i>C. reticulata</i>	Big Dipper	Ancient Garden	
324	<i>C. sasanqua</i>	Santôzaki	Ancient Garden	
325	<i>C. hiemalis</i>	Seikaiha	Ancient Garden	
326	<i>C. sasanqua</i>	Rosea	Ancient Garden	
327	<i>C. hybrid</i>	Scented Snow	Ancient Garden	
328	<i>C. japonica</i>	Scentsation	Ancient Garden	
329	<i>C. japonica</i>	Comte de Gomer	Ancient Garden	
330	<i>C. hybrid</i>	Fragrant Pink	Ancient Garden/ Winery	
331	<i>C. wabisuke</i>	Tarôkaja	Ancient Garden/ Winery	
332	<i>C. japonica</i>	Alfredo Moreira da Silva	Ancient Garden	
333	<i>C. japonica</i>	Mathotiana	Ancient Garden/ Winery	
334	<i>C. japonica</i>	General Lamoricière	Ancient Garden	
335	<i>C. japonica</i>	Usu-Otome	Ancient Garden	
336	<i>C. japonica</i>	Theresa Marchesa d'Ambra	Wood of Words	
337	<i>C. japonica</i>	Imperial Lusitana	Wood of Words	
338	<i>C. japonica</i>	Mathotiana Alba	Wood of Words/ Chapel Area	
339	<i>C. sasanqua</i>	Mine-no-yuki	Wood of Words	
340	<i>C. japonica</i>	Fukutsuzumi	Wood of Words/ Chapel Area	
341	<i>C. japonica</i>	Madame Martin Cachet	Wood of Words	
342	<i>C. hybrid</i>	Nicky Crisp	Wood of Words	
343	<i>C. japonica</i>	Commander Mulroy	Wood of Words	
344	<i>C. japonica</i>	Mrs D.W. Davis Special	Wood of Words	



No.	Specie	Cultivar	Location	DEPUTACIÓN PONTEVEDRA
345	<i>C. reticulata</i>	Nuccio's Ruby	Wood of Words	
346	<i>C. japonica</i>	Elegans Supreme	Wood of Words	
347	<i>C.x williamsii</i>	Fair Jury	Wood of Words	
348	<i>C. reticulata</i>	Star is Born	Wood of Words	
349	<i>C. hybrid</i>	Spring Mist	Wood of Words	
350	<i>C. japonica</i>	Black Domino	Wood of Words	
351	<i>C. japonica</i>	Nuccio's Carousel	Wood of Words	
352	<i>C. japonica</i>	Silver Triumph	Wood of Words	
353	<i>C. japonica</i>	Hopkin's Pink	Wood of Words	
354	<i>C. japonica</i>	Helen Bower	Wood of Words	
355	<i>C. japonica</i>	Scarlet Glory	Wood of Words	
356	<i>C. japonica</i>	Fashionata	Wood of Words	
357	<i>C. japonica</i>	High Wide'n Handsome	Wood of Words	
358	<i>C. assimilis</i>		Wood of Words	
359	<i>C. x williamsii</i>	Rose Parade	Wood of Words	
360	<i>C. reticulata hybrid</i>	Bill Woodroof	Wood of Words	
361	<i>C. Higo</i>	Mikuni-no-homare Red	Wood of Words	
362	<i>C. japonica</i>	Confetti Blush	Wood of Words	
363	<i>C. reticulata</i>	Maye Yinhong	Wood of Words	
364	<i>C. japonica</i>	Lipstick	Wood of Words	
365	<i>C. japonica</i>	Candy Apple	Wood of Words	
366	<i>C. reticulata</i>	Moutancha	Wood of Words	
367	<i>C. rosiflora</i>	Rosaeflora Cascade	Wood of Words/ Chapel Area	
368	<i>C. japonica</i>	Kona	Wood of Words	
369	<i>C. japonica</i>	Apple Blossom	Wood of Words	
370	<i>C. japonica</i>	Nuccio's Cameo	Wood of Words	
371	<i>C. reticulata</i>	Yinfen Mudan	Wood of Words	
372	<i>C. japonica</i>	Merry Christmas	Wood of Words	
373	<i>C. japonica</i>	Jordan's Pride	Wood of Words	
374	<i>C. reticulata</i>	Butterfly Wings	Wood of Words	
375	<i>C. reticulata</i>	Shot Silk	Wood of Words	
376	<i>C. x williamsii</i>	Joe Nuccio	Wood of Words/ Winery	
377	<i>C. x williamsii</i>	Garden Glory	Wood of Words	
378	<i>C. japonica</i>	Commensa	Ancient Garden	
379	<i>C. Higo</i>	Mikuni-no-homare	Wood of Words/ Winery	
380	<i>C. x williamsii</i>	Utsukushi-asahi	Wood of Words	
381	<i>C. x williamsii</i>	Rendezvous	Wood of Words/ Winery	
382	<i>C. japonica</i>	Clarise Cartion var.	Wood of Words	
383	<i>C. japonica</i>	Patricia Ann	Wood of Words	
384	<i>C. japonica</i>	Lemon Drop	Wood of Words	
385	<i>C. japonica</i>	Holly Bright	Wood of Words	
386	<i>C. japonica</i>	Granada	Wood of Words	



No.	Specie	Cultivar	Location	DEPUTACIÓN PONTEVEDRA
387	<i>C. japonica</i>	Sawada's Dream	Wood of Words	
388	<i>C. japonica</i>	Carter's Sunburst	Wood of Words	
389	<i>C. reticulata hybrid</i>	Red Crystal	Wood of Words	
390	<i>C. drupifera</i>		Wood of Words	
391	<i>C. japonica</i>	Katie	Wood of Words	
392	<i>C. japonica</i>	Show Time	Wood of Words	
393	<i>C. japonica</i>	Coronation	Wood of Words	
394	<i>C. hongkongensis</i>		Wood of Words	
395	<i>C. japonica</i>	Elegans Champagne	Wood of Words	
396	<i>C. japonica</i>	Witman Yellow	Wood of Words/ Chapel Area	
397	<i>C. reticulata hybrid</i>	China Lady	Wood of Words	
398	<i>C. japonica</i>	Dona Herzília de Freitas Magalhães	Wood of Words	
399	<i>C. japonica</i>	Joshua E. Youtz	Wood of Words/ Camellia Forest/ Chapel's Walk	
400	<i>C. japonica</i>	Compacta Alba	Wood of Words	
401	<i>C. japonica</i>	Bob's Tinsie	Wood of Words	
402	<i>C. Higo</i>	Higo-hagoromo	Games Area	
403	<i>C. sasanqua</i>	Tamafuyô	Tea Plantation	
404	<i>C. reticulata</i>	Baozhu Cha	Winery	
405	<i>C. japonica</i>	Pink Ball	Winery	
406	<i>C. x williamsii</i>	Citation	Winery	
407	<i>C. japonica</i>	Desire	Winery	
408	<i>C. japonica</i>	Blaze of Glory	Winery	
409	<i>C. japonica</i>	Betty Sheffield Coral	Winery	
410	<i>C. japonica</i>	Cara Mia	Winery	
411	<i>Cleyera japonica</i>		Winery	
412	<i>C. japonica</i>	Unryû-tsubaki	Winery	
413	<i>C. x williamsii</i>	Empire Rose	Winery	
414	<i>C. x williamsii</i>	St. Ewe	Winery	
415	<i>C. japonica</i>	Bella Portuense	Winery	
416	<i>C. japonica</i>	J.J. Whitfield	Winery	
417	<i>C. japonica</i>	Madame Louis van Houtte	Winery	
418	<i>C. japonica</i>	Guest of Honor	Winery	
419	<i>C. japonica</i>	Vicomte de Nieuport	Wood of Words	
420	<i>C. japonica</i>	Pomona	Wood of Words	
421	<i>C. japonica</i>	Candor	Wood of Words	
422	<i>C. japonica</i>	Bella di Chiavari	Wood of Words	
423	<i>C. japonica</i>	Flor da Romã	Wood of Words	
424	<i>C. japonica</i>	Mariana	Wood of Words	
425	<i>C. japonica</i>	White Lily	Wood of Words	
426	<i>C. japonica</i>	Sunset Oaks	Wood of Words	
427	<i>C. japonica</i>	Bienville	Wood of Words	



No.	Specie	Cultivar	Location	 DEPUTACIÓN PONTEVEDRA
428	<i>C. japonica</i>	Katherine Nuccio	Wood of Words	
429	<i>C. japonica</i>	Princess Lavender	Oriental Garden	
430	<i>C. rusticana</i>	Botanyuki	Chapel's Walk/Wood of Words	
431	<i>C. hybrid</i>	Scentuous	Oriental Garden	
432	<i>C. japonica</i>	Bonomiana Nova	Wood of Words	
433	<i>C. reticulata</i>	Mouchang	Wood of Words	
434	<i>C. reticulata hybrid</i>	Fire Chief Variegated	Wood of Words	
435	<i>C. reticulata hybrid</i>	Buddha	Wood of Words	
436	<i>C. reticulata hybrid</i>	Confucius	Wood of Words	
437	<i>C. japonica</i>	Kewpie Doll	Wood of Words	
438	<i>C. Higo</i>	Tenjû	Wood of Words	
439	<i>C. maliflora</i>	Betty McCaskill	Wood of Words	
440	<i>C. japonica</i>	Saudade de Martins Branco	Wood of Words	
441	<i>C. japonica</i>	Conde das Devezas	Wood of Words	
442	<i>C. x williamsii</i>	Tulip Time	Wood of Words	
443	<i>C. japonica</i>	Rio Tollo	Wood of Words	
444	<i>C. japonica</i>	Elegans	Tea Plantation	
445	<i>C. x williamsii</i>	Ballet Queen variegated	Chapel's Walk	
446	<i>C. reticulata hybrid</i>	Royalty	Chapel's Walk	
447	<i>C. japonica</i>	Shirobotan	Chapel's Walk	
448	<i>C. japonica</i>	Dixie Knight	Chapel Area	
449	<i>C. x williamsii</i>	E.G. Waterhouse Variegated	Chapel's Walk	
450	<i>C. reticulata</i>	William Hertrich	Chapel's Walk	
451	<i>C. gaochuensis</i>		Chapel's Walk	
452	<i>C. japonica</i>	Robert Lowell Cooper	Chapel's Walk	
453	<i>C. japonica</i>	Kerguelen	Chapel's Walk	
454	<i>C. sasanqua</i>	Navajo	Chapel Area	
455	<i>C. japonica</i>	Stella	Chapel's Walk	
456	<i>C. japonica</i>	Willard Scott	Chapel's Walk	
457	<i>C. japonica</i>	Honeyglow	Chapel's Walk	
458	<i>C. japonica</i>	Hey	Chapel's Walk	
459	<i>C. japonica</i>	Glenn Hanchey	Chapel's Walk	
460	<i>C. japonica</i>	Brother Rose	Chapel's Walk	
461	<i>C. x williamsii</i>	Anticipation	Chapel Area	
462	<i>C. japonica</i>	Althaeiflora	Chapel Area	
463	<i>C. japonica</i>	Grandiflora Alba	Chapel Area	
464	<i>C. japonica</i>	Venus de Medici Rubra	Chapel Area	
465	<i>C. japonica</i>	Venus de Medici	Chapel Area	
466	<i>C. japonica</i>	Madame Charles Blard	Chapel Area	
467	<i>C. japonica</i>	Lavinia Maggi Rouge	Chapel Area	
468	<i>C. japonica</i>	Maria Irene	Chapel Area	
469	<i>C. japonica</i>	Docteur Louti	Chapel Area	





No.	Specie	Cultivar	Location	 DEPUTACIÓN PONTEVEDRA
470	<i>C. japonica</i>	White Empress	Chapel Area	
471	<i>C. japonica</i>	Extravaganza	Chapel Area	
472	<i>C. sasanqua</i>	Narumigata	Chapel Area	
473	<i>C. japonica</i>	Versicolor	Chapel Area	
474	<i>C. sasanqua</i>	Azuma-nishiki	Chapel Area	
475	<i>C. sasanqua</i>	Little Pearl	Chapel Area	
476	<i>C. sasanqua</i>	Pure Silk	Chapel Area	
477	<i>C.x hiemalis</i>	Bonanza	Chapel Area	
478	<i>C. sasanqua</i>	Midget	Chapel Area	
479	<i>C. sasanqua</i>	Bert Jones	Chapel Area	
480	<i>C. oleifera</i>		Chapel Area	
481	<i>C. saluenensis hybrid</i>	Ole	Winery	
482	<i>C. japonica</i>	General Leclerc	Winery	
483	<i>C. japonica</i>	Black Magic	Winery	
484	<i>C. japonica</i>	Triumphans	Winery	
485	<i>C. japonica</i>	Vergine di Collebeato	Tea Plantation	
486	<i>C. japonica</i>	Bouturlin	Tea Plantation	
487	<i>C. japonica</i>	Flore Pleno	Swiming Pool Area	
488	<i>C. euryoides</i>		Ancient Garden	



## Annexe D. Pictures.

Some places and plants that you can see in Quinteiro da Cruz.



*Weigelia florida*



*Rosa sp*



*Justicia carnea*



Beautiful and peaceful places of the garden to take a breath.



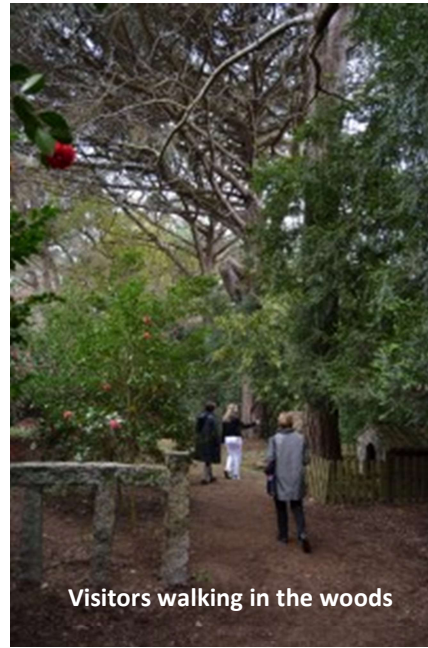
*Cedrus deodara*



Detail of pine from *Cedrus deodara*



*Eucalyptus globulus* in the entrance of Words wood



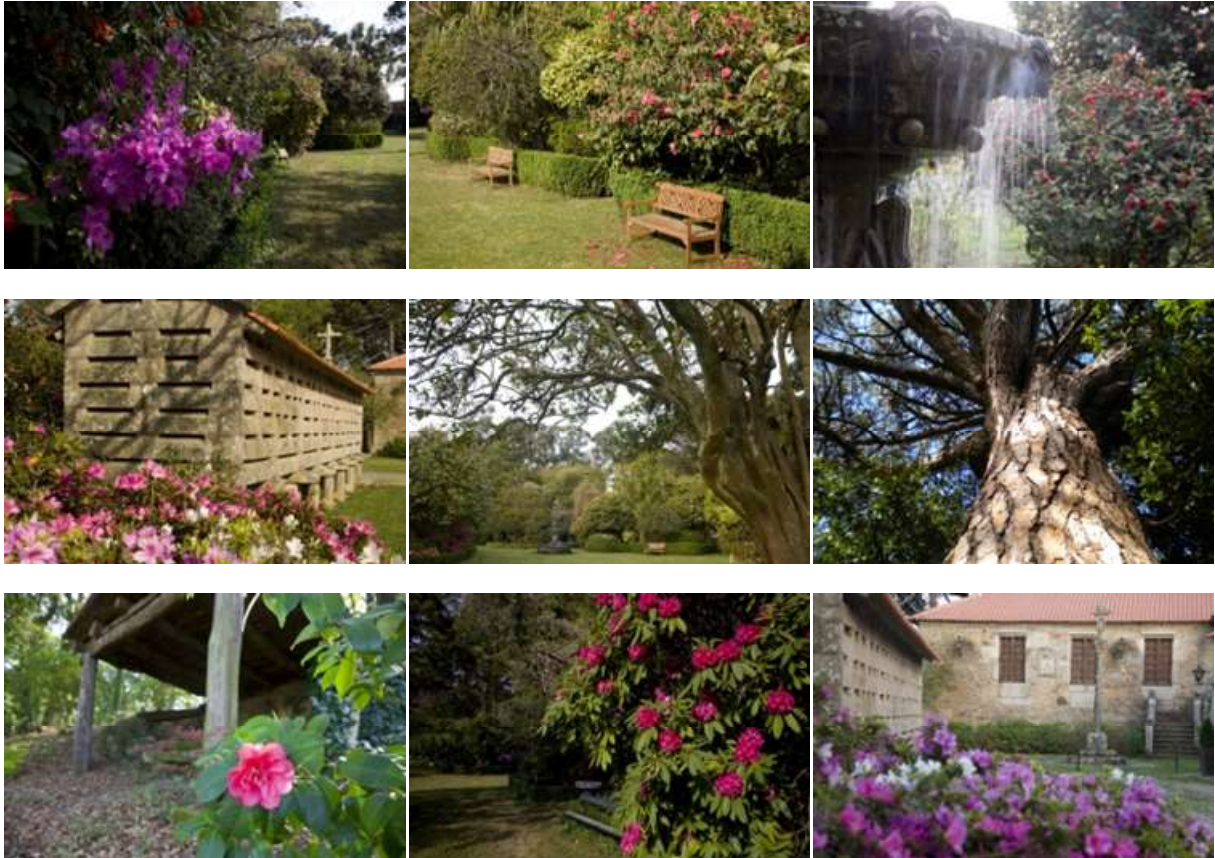
Visitors walking in the woods



Species of *Leucospermum*



Image of *Protea*



Garden views.



Camellia forest.



Camellias at Quinteiro da Cruz.





*C. japonica* 'Hopkins Pink'



*C. japonica* 'Latifolia'



*C. nitidissima*



*C. japonica* 'L.T. Dees'



*C. x williamsii* 'Donation'



*C. x williamsii* 'Rendezvous'



*C. hybrid* 'Barbara Clark'



*C. hybrid* 'Loki Scmidt'



*C. reticulata* 'Miss Tulare'



*C. reticulata* 'Captain Rawes'

### Labels



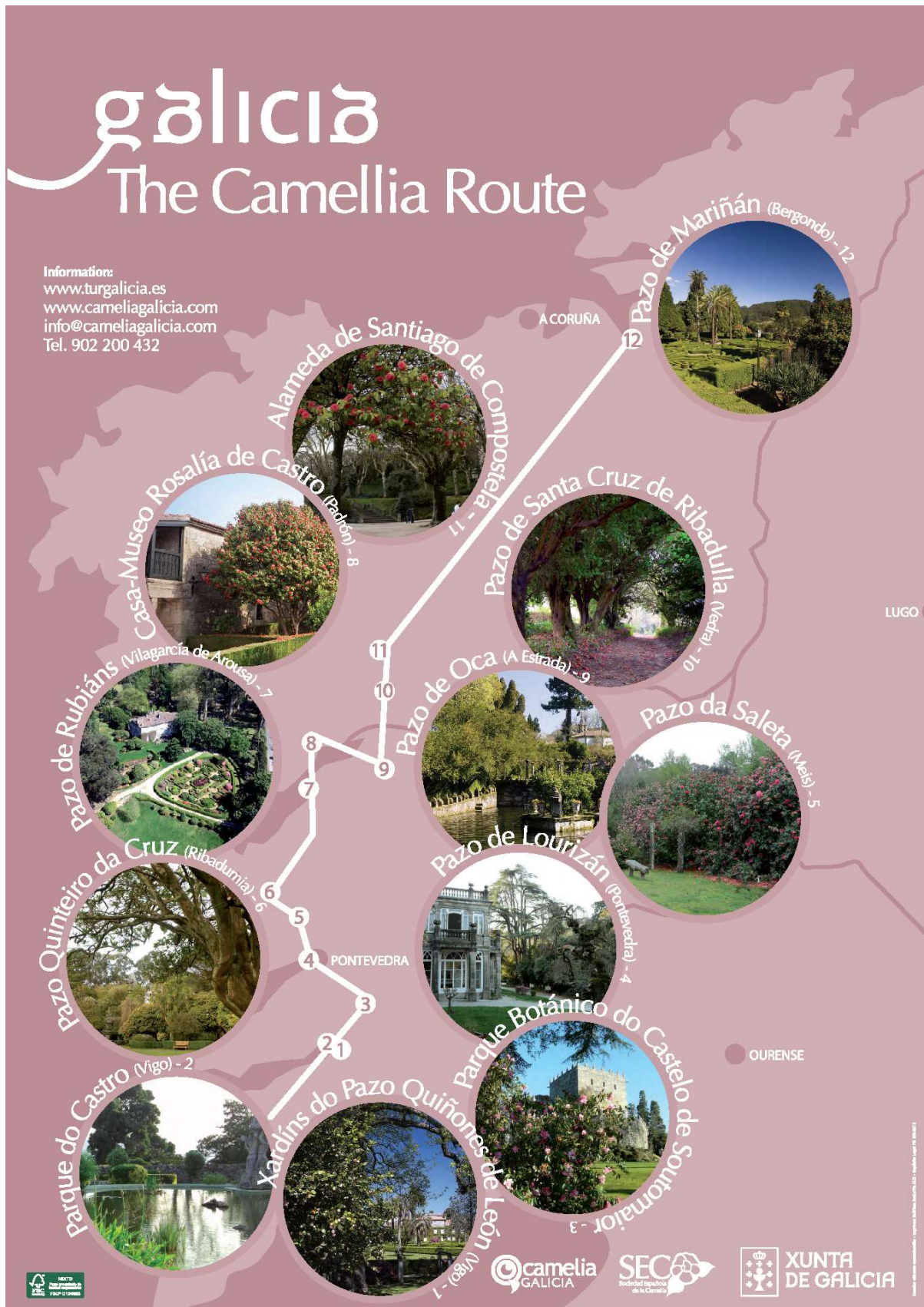
Labels of camellias for AR application.



New labels that of camellia plants that are replacind the old ones .



Poster showing the twelve gardens of The camellia Route in Galicia.







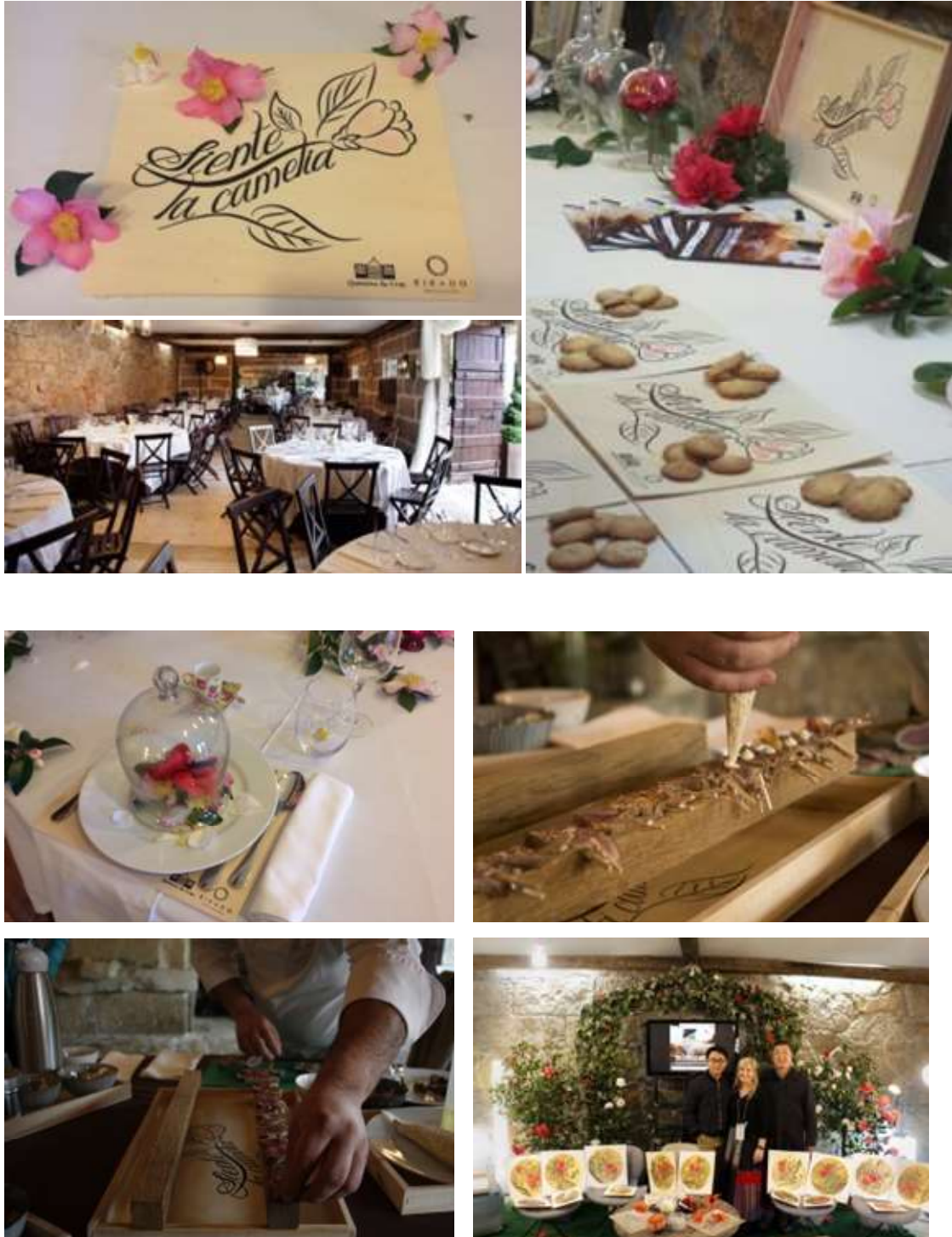


Poster of The Camellia Route of Galicia .



Events and projects

Images of the event *Come and eat the camellia* belonging to the project “Feel the camellia” developed by Quinteiro da Cruz and the famous Galician chef Iñaki Bretal (March 2017).





Chinese painting exhibition (May 2016).



Other events at Quinteiro da Cruz.





Shop

Images of the shop where the visitor can find some articles related with camellia and also, *albariño* wine.





AR application













**Quinteiro da Cruz**  
jardín botánico - colección de Camelias



INTERNATIONAL  
CAMELLIA SOCIETY  
SPAIN



**SEC**  
Sociedad Española  
de la Camelia



**DEPUTACIÓN**  
PONTEVEDRA  
ESTACIÓN FITOPATOLÓGICA AREIRO