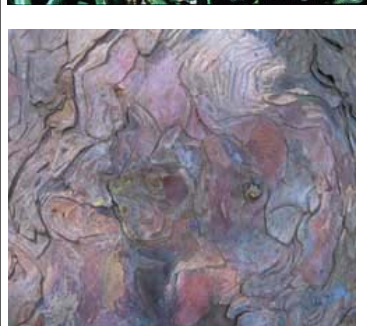


Large Shrub (8—15')  
Evergreen

Map #91

*Yew*

(*Taxus x media*)  
Family: *Taxaceae*



**Leaves:** The dark green needle-like leaves are 1/2 - 1" long and light green below. The leaves on this hybrid are often borne in two flattened horizontal ranks. This is in contrast to the more radial appearance of the leaves on *T. cuspidata*.

**Buds:** Small, ovate and imbricate, the 1/8" yellowish brown buds have scales.

**Stems:** The stem color remains green for two years in contrast to the stems of *T. cuspidata* which turn brown in the second year.

**Bark:** The bark is smooth, patchy with a blending of mauve, reddish brown, gray, tan and brown colors. This beautiful bark is not seen unless plants are limbed up to open a view into the trunk.

**Flowers:** Not important.

**Fruits:** Technically a naked seed surrounded by a fleshy red aril, the toxic bronze colored seeds mature in the fall. Being a dioecious species, the seeds are borne only on female plants.

**Habit:** Varies by cultivar and species but usually if left unpruned attains great sizes.

**Culture:** best evergreen shrub for shade; does not tolerate wet soil; tolerates severe pruning and shearing even topiary; most common landscape evergreen shrub.

**Miscellaneous:** This popular hybrid between *Taxus baccata* and *Taxus cuspidata* is the source of numerous cultivars with a variety of habits and sizes.

**Cultivars:** 'Brownii' - rounded male cultivar 10' tall by 12' wide; 'Densiformis' - broad, rounded dwarf 4' tall by 6' wide; 'Hicksii' & 'Hatfieldii' - upright branching used for hedges grows 15' tall and 20' wide; 'Tauntonii' - dense dwarf widespreading to 5' x 8'.

**Related species:** *T. cuspidata* 'Capitata' - the Cap Yew—very pyramidal with a central leader.





Hicks Yew (*T. x media* 'Hicksii')



Taunton Yew (*T. x media* 'Tauntonii')



Dense Yew (*T. x media* 'Densiformis')



**Credits:** Photos from: [www.midwestlandscapeplants.org](http://www.midwestlandscapeplants.org) and various other .edu websites unless noted. Text from: "Manual of Woody Landscape Plants" by Michael Dirr; "Tree Identification Characteristics (abridged)" from the University of Illinois Extension; [www.midwestlandscapeplants.org](http://www.midwestlandscapeplants.org); and misc. other sources. This publication may not be sold except to cover the cost of reproduction when used as part of an educational program of the University of Wisconsin-Extension.