

INTRODUCTION

1931



**International Conifer Conference
held by the Royal Horticultural
Society of England**

1932



**Colonel Robert H. Montgomery
issues a call for 100 conifer
enthusiasts to assemble and form a
conifer society**

1939



**Charles F. Jenkins attempted to
start a hemlock society.**

1982



**Jean Iseli and Joel Spingarn
contacted known conifer collectors
to form a conifer society.**

AMERICAN
CONIFER SOCIETY

Bulletin



Tsuga canadensis 'Betty Blue'



VOL. 1

SUMMER 1983

NO. 1

Summer, 1983

**First issue of the Bulletin is mailed
to members. Robert Fincham,
Acting Editor**



1983

The American Conifer Society is born with Robert Fincham as its first President. Classification as a C3 Charity is quickly obtained through the efforts of William Schwartz, Esq.



July 30, 1983

**The first ACS board meeting
was held at the first annual
meeting.**

A TOUGH ACT TO FOLLOW

**Conifer collectors of the early and
mid 1900's and the founding members
of the American Conifer Society**

**Presented July 19, 2003
ACS 20th Annual Meeting in Denver
by
Robert L. Fincham**

Tsuga canadensis

- **The Canadian hemlock was the primary focus of American conifer collectors during the 1920's-1940's.**



Charles Francis Jenkins



The Hemlock Arboretum At "FAR COUNTRY"

Germantown, Pa.

Bulletin No. 1

July 1, 1932

*"No other conifers surpass the hemlocks in grace
and beauty."—Prof. Charles S. Sargent.
Silva of North America, Vol. XII, P. 61.*

"Far Country" is located on the outskirts of Germantown, a part of the city of Philadelphia, on a plateau overlooking the Wissahickon Valley and surrounded on three sides by the lands of Fairmount Park. Here in the romantic gorges and rocky hillsides of the Wissahickon the Eastern Hemlock, *Tsuga Canadensis*, grows naturally and in great profusion. In the spring of 1931, with a foundation of numerous specimens of three varieties planted in the spring of 1917, I determined to establish a hemlock arboretum and bring together all the varieties which would grow in southeastern Pennsylvania. My list is not yet complete but I am giving it herewith in the expectation that there are other varieties which a little publicity may enable me to secure.

The arboretum has been recognized by the Department of Agriculture.

While I lack the botanical and technical scientific training to get the most out of such a collection, I will be able to afford to students, botanists, horticulturists and nurserymen opportunities for comparative studies. I can determine which varieties are safely adapted to our climate and I may be able to introduce to my friends some new varieties which will give pleasure to them.

"Far Country" is located on Kitchen's Lane, West of Wissahickon Avenue and is reached by trains on the Chestnut Hill branch of Pennsylvania Railroad to Tulpehocken Station or by trolley No. 53 on Wayne Avenue to Carpenter Lane. A cordial welcome is extended to all who may be interested in visiting this Embryo arboretum. Correspondence is invited with those who may have varieties not listed on the following pages.

CHARLES F. JENKINS

Charles Francis Jenkins

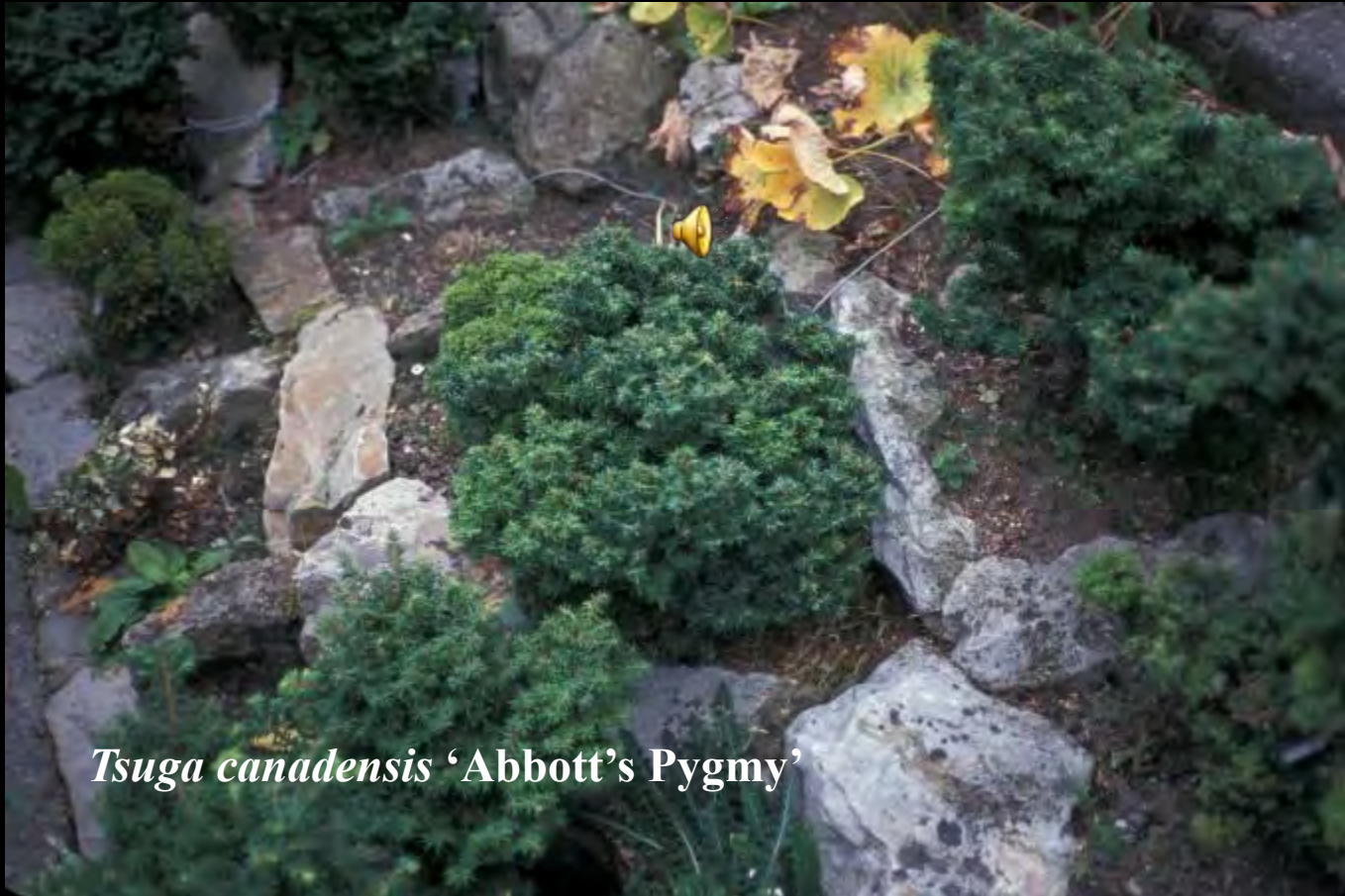
- Collected variations of *Tsuga* while documenting their origins and maintained a personal history of the collectors of his time.
- Financed the graduate work of John Swartley.



Tsuga canadensis
'Jenkinsi'

Tsuga canadensis

- Frank L. Abbott found many variations of *Tsuga canadensis* in Vermont and was one of “the big three collectors” during the 30’s and 40’s.

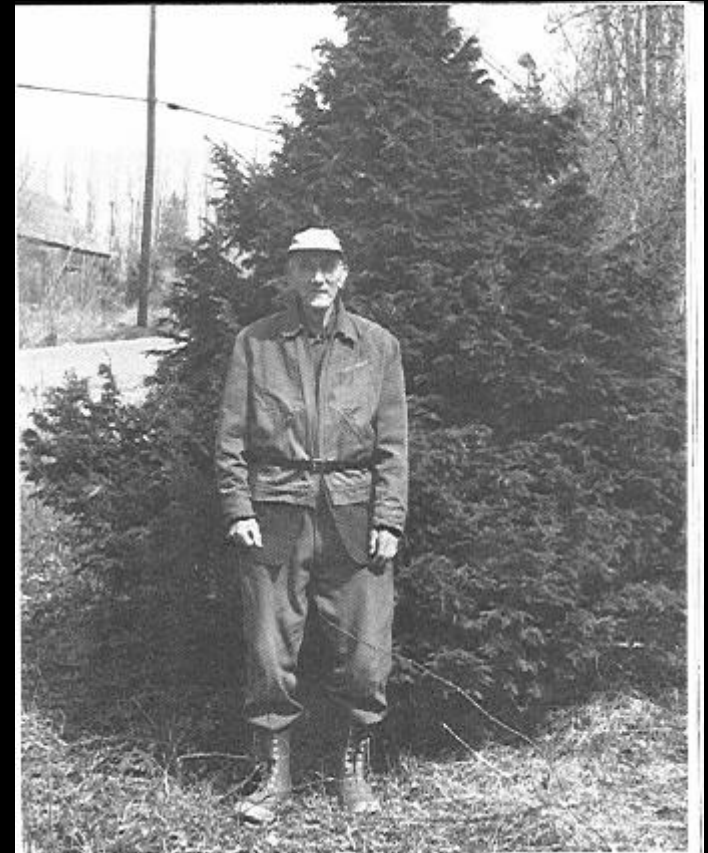


Tsuga canadensis

- **Frank L. Abbott found many variations of *Tsuga canadensis* in Vermont.**
- **George Ehrle, Curtis Nursery in Callicoon, New York grew many *Tsuga canadensis* variants from seed, which he germinated in the 1920's.**
- **Joseph Gable grew *Tsuga canadensis* variants in Stewartstown, Pennsylvania, gathered from a variety of sources.**

Daniel St. George

Collected hemlock seedlings for market. He often worked with Frank Abbott, George Ehrle (Curtis Nursery, New York), and Bill Horsford, as customers and as fellow collectors for special variants.



Important Early Public Conifer Collections

- Durand Eastmond Park, Rochester, New York

Established through the efforts
of Bernard H. Slavin.



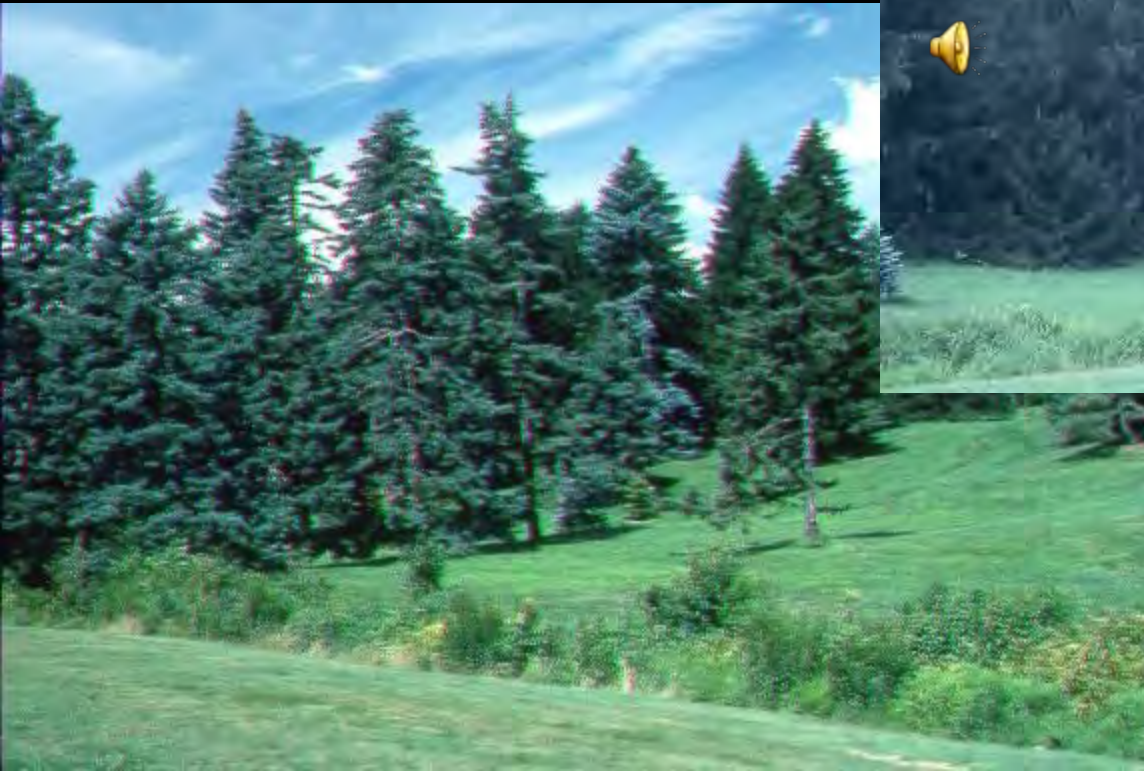
FIG. 28.—PART OF THE DWARF CONIFER COLLECTION, DURAND EASTMAN PARK, R.



FIG. 31.—HILLSIDE, PINETUM, DURAND EASTMAN PARK, ROCHESTER, N.Y.—*JUNIPERUS VIRGINIANA*
AND *PICHA GLAUCA*.

Important Early Public Conifer Collections

- **Arnold Arboretum, Jamaica Plain, Massachusetts**



Important Early Private Conifer Collections

- **Hemlock Arboretum at Far Country, Philadelphia, Pennsylvania**



Important Early Private Conifer Collections

- **Colonel Robert H. Montgomery's Collection at Cos Cob, Connecticut eventually donated to the New York Botanic Garden.**



The late Colonel Robert H. Montgomery and the conifer named in his honor, *Picea pungens glauca* 'R. H. Montgomery.'



THE MONTGOMERY
CONIFER COLLECTION
AT
The New York Botanical Garden

1934-35-36

Colonel Robert H. Montgomery

- *Picea pungens* 'R.H. Montgomery'



COLLECTORS OF THE 1950'S

Collectors of the 1950's

- Jon Spaan on the west coast



Pinus sylvestris 'Spaan's Slow Column'

Collectors of the 1950's

- Jon Spaan on the west coast



Pinus contorta 'Spaan's Dwarf' (L) *Pinus mugo*
'Spaan's Pygmy' (B)



Collectors of the 1950's

- Andy Sherwood in Gresham, Oregon



THE HIGHWAY OR THE BYWAY

REUBEN W. JONES

The long, smooth, hard-paved highway of today,
Where speed the horseless marvels in their flight,
Over hill and valley whirling on their way,
A constant stream by day and glowing thro' the night,
With hoodless, reckless racing on and on,
Scouts gazing at the glories that abound—
The wheel, the road, and ever on beyond—
Not seeing scenes and vistas all around.

Give me the byway, and a friend aloft,
Where we may saunter on, just as we like,
And if the day be fine and spirits high, to put
Behind us miles on rails—a glorious hike,
To stroll 'neath moss-hound woodens 'long the trail,
Surround you hill, then, deep in forest glen,
Breathe, feel, and share a joy that cannot fail,
When free from auto hoofs and hoists of man.



SHERWOOD NURSERY CO.

Division of Snow Don Nursery, Inc.

ENTRANCES • PROPAGATORS AND GROWERS • WETA BLENCH

OFFICE AND MAILING ADDRESS
12222 N.E. ROSE PARKWAY, PORTLAND, OREGON 97228
PHONE: (503) 255-0819

NURSERY
GRESHAM, OREGON (SEE MAP ON BACK)
PHONE: (503) 663-3709

Fall 1971

Spring 1972

Collectors of the 1950's

- Andy Sherwood in Gresham, Oregon

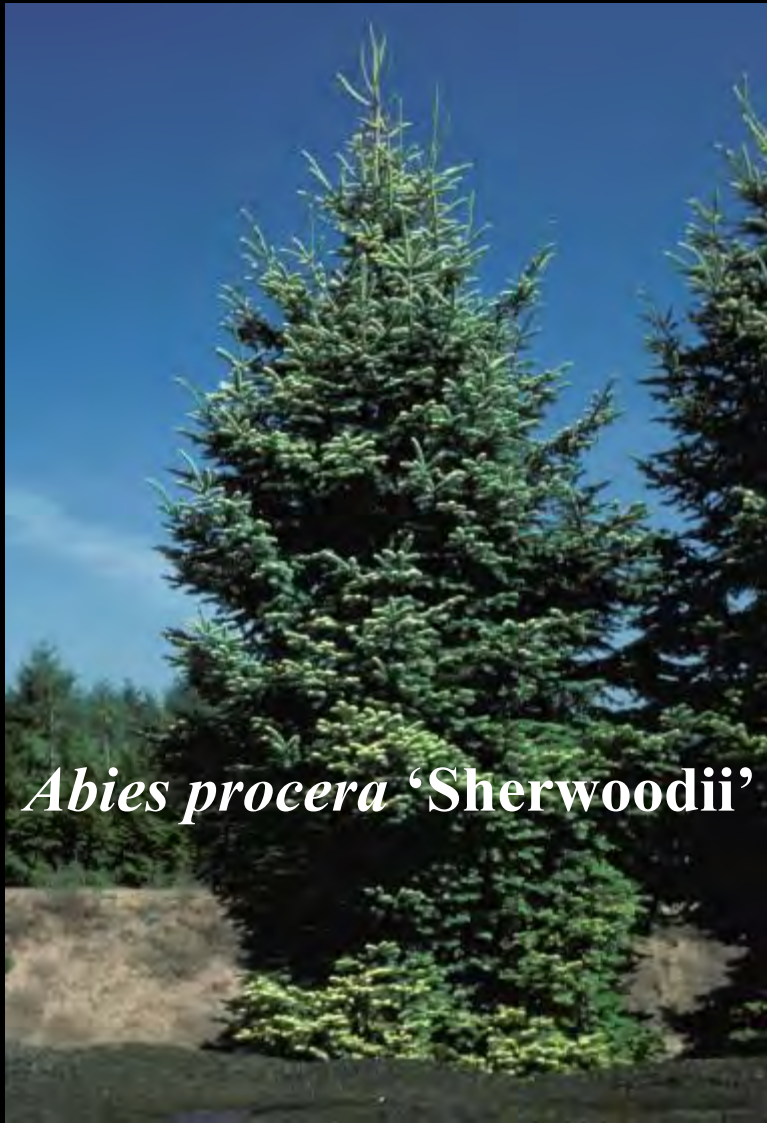


Pinus aristata 'Sherwood Compact' (L) *Tsuga canadensis* 'West Coast Creeper' (B)



Collectors of the 1950's

- Andy Sherwood in Gresham, Oregon



Abies procera 'Sherwoodii'



Pinus mugo 'Sherwood Compact'

Collectors of the 1950's

- James Caperci
in Seattle,
Washington



Tsuga mertensiana 'Elizabeth'



Pinus parviflora 'Ogon Janome'

Collectors of the 1950's

- Ed Lohbrunner in Vancouver, British Columbia



Collectors of the 1950's

- John Vermeulen, Neshanic Station, New Jersey



John Vermeulen
FOUNDER



in Pots, Paks
and Containers



Specialists in
Propagation and
Lining-Out Stock


JOHN VERMEULEN & SON, INC.
Box 600 • NESHANIC STATION, N.J. 08853 • Phone: 908: 369-5211
Fax : 908: 369-5176

US POSTAGE
PAID
NESHANIC STATION, NJ
08853
Permit No. 1

Collectors of the 1950's

- John Vermeulen, Neshanic Station, New Jersey



Pinus flexilis 'Vanderwolf's Pyramid' (L)
and 'Pendula' (B)



Collectors of the 1950's

- **John Swartley** worked on refining his Thesis on *Tsuga canadensis*



Collectors of the 1950's

- John Swartley at the Delaware Valley College dedication of *Tsuga canadensis* f. *pendula*.



COLLECTORS OF THE 1960'S

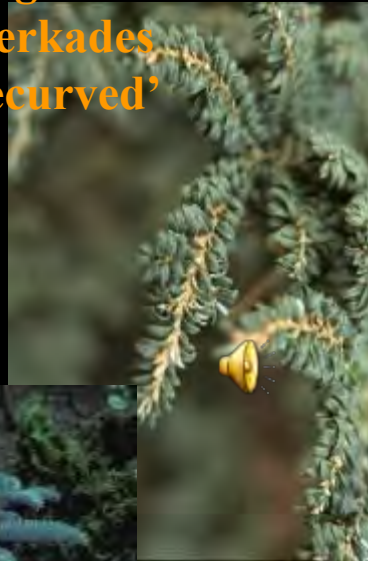
Collectors of the 1960's

- John Verkade, Pompton Plains, New Jersey

Picea orientalis 'Tom Thumb Gold'



Tsuga canadensis 'Verkades Recurved'



Abies lasiocarpa 'Green Globe'



Tsuga canadensis 'Jan Verkade'

Tsuga canadensis 'Jacquelin Verkade'

Collectors of the 1960's

- **John Verkade at the ACS formative meeting.**




Collectors of the 1960's

- Don and Hazel Smith, Morris Plains, New Jersey



Open by Appointment
Phone: (201) 539-0312

WATNONG
NURSERY



THE DON SMITHS
Morris Plains, N. J. 07950
Phone (201) 539-0312

Where you may find unusual and rare plants

Collectors of the 1960's

- Don and Hazel Smith, Morris Plains, New Jersey



Collectors of the 1960's

- Don and Hazel Smith, Morris Plains, New Jersey

Sequoiadendron giganteum 'Hazel Smith' (F)



Pinus resinosa 'Don Smith'

Collectors of the 1960's

- Don and Hazel Smith at the ACS formative meeting.



Don with Greg Williams



Don with Joel Spingarn



Don with Hank Wiesenberger and Tom Dilatush



Hazel with Al Fordham

Collectors of the 1960's

- Fred Bergman, Feasterville, Pennsylvania

from John Startley
RARAFLORA 10/31/73
RARE PLANTS . ARABIAN HORSES . ANTIQUE FIREARMS

FRED W. & HELENE M. BERGMAN
1195 STUMP ROAD
FEASTERVILLE, PA.
215 357-3791

.....
ABOUT RARAFLORA..... MANY YEARS AGO OUR PLANT LOVING
FAMILY ESTABLISHED, IN HISTORIC LOWER BUCKS COUNTY, A
PRIVATE ARBORETUM DEVOTED TO THE GROWING OF RARE, DWARF
AND SLOW GROWING WOODY PLANTS. ALTHOUGH AN ENJOYABLE
HOBBY HAS EVOLVED INTO A PART-TIME ENTERPRISE, IT MUST
BE STRESSED THAT RARAFLORA IS NOT A COMMERCIAL NURSERY
AND OUR GROUNDS ARE NOT OPEN TO THE PUBLIC. SINCE MAIN-
TENANCE AND IMPROVEMENT OF THE ARBORETUM REMAIN OUR
MAJOR GOAL, PROPAGATION AND RESULTANT SALE OF PLANTS*
MUST BE EXTREMELY LIMITED IN SCOPE. (OBVIOUSLY, WHOLE-
SALE QUANTITIES AND PRICES ARE IMPOSSIBLE.) ALSO, SINCE
OUTSIDE HELP IS NOT EMPLOYED, IT HAS BECOME URGENT THAT
WE CAREFULLY BUDGET OUR TIME IN ORDER TO ADEQUATELY CARE
FOR OUR MANY INTERESTS. THEREFORE STRICT ADHERENCE TO
THE FOLLOWING SUGGESTIONS IS REQUESTED.

VISITATION IS BY APPOINTMENT ONLY, BUT IF UNEXPECTEDLY
IN OUR AREA, A PHONE CALL MAY FIND US ABLE TO SEE YOU.

Collectors of the 1960's

- Fred Bergman, Feasterville, Pennsylvania



Collectors of the 1960's

- Fred Bergman, Feasterville, Pennsylvania



Pinus parviflora 'Bergmani'



Pinus sylvestris
'Barrie Bergman'



COLLECTORS OF THE 1960'S AND 1970'S

Collectors of the 1960's and 1970's

- **John Mitsch, Aurora, Oregon**



Pinus sylvestris 'Mitsch Weeping'



Pinus mugo 'Mitsch
Mini'

Collectors of the 1960's and 1970's

- **Alfred Fordham, Arnold Arboretum, Jamaica Plain, Massachusetts**



Collectors of the 1960's and 1970's

- Alfred Fordham, Arnold Arboretum, Jamaica Plain, Massachusetts



Tsuga canadensis 'Brookline'



Collectors of the 1960's and 1970's

- Alfred Fordham grew *Pinus banksiana* seedlings: 'Schoodic' from seed collected from a prostrate form in Maine; and 'Manomet' and 'Chippewa' from a witches' broom found in the midwest.



'Manomet'



'Chippewa'



'Schoodic'



Collectors of the 1960's and 1970's

- Alfred Fordham also grew broom seedlings of *Pinus resinosa* and *strobis*.



Pinus strobus 'Uncatena' (L) and *resinosa* 'Quinobequin' (R)

Collectors of the 1960's and 1970's

- Alfred Fordham at the ACS formative meeting.

Al with Sid Waxman and Don Smith



Al and Hazel Smith

Collectors of the 1960's and 1970's

- Joel Spingarn, Baldwin, New York



Collectors of the 1960's and 1970's

- Joel Spingarn named several seedling selections of *Chamaecyparis obtusa*.



'Golden Nymph'



'Dainty Doll'



'Golden Sprite'



Collectors of the 1960's and 1970's

- Joel Spingarn at the ACS formative meeting.



Collectors of the 1960's and 1970's

- Rudi Kluis, Marlboro, New Jersey



Pinus densiflora 'Jane Kluis'



Picea abies
'Kluis'

Collectors of the 1960's and 1970's

- **Martin Brooks, Doylestown, Pennsylvania**



COLLECTORS OF THE 1970'S AND 1980'S

Collectors of the 1970's and 1980's

- Layne Ziegenfuss, Lehighton, Pennsylvania and Greg Williams, Wolcott, Vermont



Picea glauca 'Cecilia'

Collectors of the 1970's and 1980's

- Layne Ziegenfuss and Greg Williams: plant introductions



Collectors of the 1970's and 1980's

- Layne Ziegenfuss and Greg Williams: plant introductions

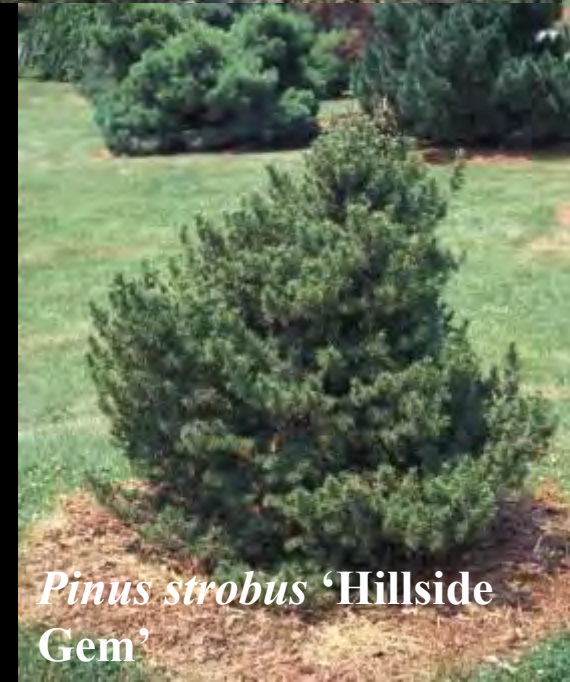
Pseudotsuga menziesii
'Hillside Gold'



Pseudotsuga menziesii 'Hillside
Pride'



Pinus strobus 'Hillside
Winter Gold'



Pinus strobus 'Hillside
Gem'

Collectors of the 1970's and 1980's

- Layne Ziegenfuss and Greg Williams: plant introductions

Pinus strobus 'Greg'



Pinus sylvestris 'Hillside Creeper'



Collectors of the 1970's and 1980's

- Layne and Greg introduced many other plants through Layne's Hillside Gardens.



Pinus virginiana
'Wate's Golden'

Pseudotsuga menziesii
'Graceful Grace' and
'Little Jon'



Pinus
sylvestris
'Bennett
Compact'



Collectors of the 1970's and 1980's

- Layne and Greg at the ACS formative meeting



John Verkade, Layne, and Greg



Greg, Layne, Bob
Fincham, and Sid
Waxman



Don Smith and Greg



Collectors of the 1970's and 1980's

- Greg Williams: finds

Pinus strobus 'Stowe Pillar'



Pinus strobus
'Tiny Kurls'



Pinus strobus 'Louie'



Collectors of the 1970's and 1980's

- Greg Williams: finds



Picea abies 'Perry's Gold'



Picea abies 'Vermont Gold'

Collectors of the 1970's and 1980's

- **Joe Burke, Merrick, New York**

Pinus parviflora

'Burke's Bonsai'



Collectors of the 1970's and 1980's

- Joe Reis and Ed Rezek were two names that were always said together, like Layne and Greg.



Chamaecyparis obtusa 'Bess'



Joe Reis and his best selection (Elizabeth) are shown here.

Collectors of the 1970's and 1980's

Joe Reis and his selections.



Chamaecyparis obtusa 'JR'



Chamaecyparis obtusa
'Meroke'



Chamaecyparis obtusa
'Reis Dwarf'



Collectors of the 1970's and 1980's

The Joe Reis Garden



Chamaecyparis obtusa
'Bess'

Collectors of the 1970's and 1980's

- Ed Rezek and his garden



Collectors of the 1970's and 1980's

- Ed Rezek and his garden



Collectors of the 1970's and 1980's

- Joe Reis and Ed Rezek at the ACS formative meeting.



Collectors of the 1970's and 1980's

- **Dave Patterson was in charge of the grounds at Longwood Gardens, Kennett Square, Pennsylvania.**



Collectors of the 1970's and 1980's

- Dick Bush, Canby, Oregon at ACS meetings



Collectors of the 1970's and 1980's

Picea englemannii
'Lace'

- Dick Bush introductions



Picea pungens 'Porcupine'

Collectors of the 1970's and 1980's

- Jean Iseli, Boring, Oregon



Collectors of the 1970's and 1980's

- Jean Iseli, Boring, Oregon



Collectors of the 1970's and 1980's

- Jean Iseli's garden and introductions

Picea pungens
'Iseli Fastigate'



Picea pungens 'Donna's
Rainbow'



Collectors of the 1970's and 1980's

- Jean Iseli's introductions

Picea pungens 'Iseli Foxtail'



Picea pungens 'Fat Albert'



Collectors of the 1970's and 1980's

- Jean Iseli at the ACS formative meeting



Jean, Howard Kellerman, John Verkade



Jean, Harold Epstein, Maxine Schwarz, Tom Dilatush

Collectors of the 1970's and 1980's

- **Gordon Bentham, Victoria, British Columbia**



Collectors of the 1970's and 1980's

- **Gordon Bentham and Flora Vista introductions**

Cedrus deodara 'Silver Mist'



Collectors of the 1970's and 1980's

- **Gordon Bentham and Flora Vista introductions**



Cedrus deodara 'Cream Puff'



Abies koreana 'Aurea'

Picea sitchensis
'Bentham's Sunlight'



Collectors of the 1970's and 1980's

- Edsel Wood, Wilsonville, Oregon



Cryptomeria japonica 'Ryoku Gyoku'

Collectors of the 1970's and 1980's

- Edsel Wood discoveries



Collectors of the 1970's and 1980's

- **Sidney Waxman, Storrs, Connecticut**



Collectors of the 1970's and 1980's

- **Sidney Waxman, Storrs, Connecticut**



Pinus strobus 'Blue Shag'

Pinus strobus
'Green
Shadow' (R)



Pinus strobus 'Sea Urchin'

Collectors of the 1970's and 1980's

- Sidney Waxman at the ACS formative meeting

Layne Ziegenfuss, Bob Fincham, and Sidney



Collectors of the 1970's and 1980's

- **Jim Cross, Cutcheague, New York**

Harold Epstein and Jim



Collectors of the 1970's and 1980's

- **Jim Cross: entrance to Environmentals**



Collectors of the 1970's and 1980's

- **Billy Schwartz, Philadelphia, Pennsylvania**



Collectors of the 1970's and 1980's

- **Tom Dilatush, Robbinsville, New Jersey at the ACS formative meeting**



Collectors of the 1970's and 1980's

- Augustus Kelly, Little Compton, Rhode Island

THEOPHRASTUS

Post Office Box 458
Little Compton, R. I. 02837

DWARF CONIFER *Notes*

Volume I, Number 1

January 1980



Dwarf Conifer Notes is launched with the purpose of providing a focal point for dwarf conifer enthusiasts, hitherto scattered and lonely, to exchange information and discuss matters of mutual interest. With this first issue, I want to emphasize that there is no subscription charge. An expression of interest such as a post card or a letter will suffice to get on the mailing list. By mailing to the membership of organizations that may include dwarf conifer enthusiasts, I am trying to seek out those who might find this venture useful and interesting, but it does not follow that because you have received this first issue you will receive subsequent issues without some positive action on your part.

Humphrey J. Welch's Manual of Dwarf Conifers

Permission has been kindly given by the editorial board of the Bulletin of the University of Washington Arboretum to quote from a forthcoming review by Mr. Brian O. Mulligan of Manual of Dwarf Conifers. Mr. Mulligan is the former director of the Arboretum, and a member of the board of the Royal Horticultural Society, among other posts of honor in the horticultural world. I quote:

This is indeed the latest word on this fascinating group of small shrubs. It is written by a grower, propagator, and careful student of many years of experience among them. The amount of research and correspondence involved, as well as travel to the continent of Europe and the U. S. A., is obviously enormous and only to be fully appreciated by the author, who along with the publishers deserves much praise for this fine production.

Collectors of the 1970's and 1980's

- **Augustus Kelly at the ACS formative meeting.**



Collectors of the 1970's and 1980's

- **Harold Epstein, Larchmont, New York at the ACS formative meeting**



Collectors of the 1970's and 1980's

- **Bob Fincham, a school teacher by profession, started collecting conifers in the 1970's.**



Collectors of the 1970's and 1980's



Picea glauca 'Beehive'



Picea abies 'Gold Drift'



Picea mariana
'Blue Teardrop'



Pinus mugo 'Little Delight'

Collectors of the 1970's and 1980's



Bob with Layne Ziegenfuss and Syd Waxman at the ACS formative meeting

Bob with Al Fordham



Gardens of the 1970's and 1980's

- Alphonso Ossorio, East Hampton, New York



Gardens of the 1970's and 1980's

- **Alphonso Ossorio: The Creeks**



Gardens of the 1970's and 1980's

- **Alphonso Ossorio: The Creeks**



Gardens of the 1970's and 1980's

- Alphonso Ossorio with an ACS group following the first annual meeting in 1983.



Gardens of the 1970's and 1980's

- **Gotelli Dwarf Conifer Collection at the United States National Arboretum**



Gardens of the 1970's and 1980's

- Chub Harper and the collections at Hidden lake and The Bickelhaupt Arboretum



Gardens of the 1970's and 1980's

- Chub Harper and the collection at Hidden lake



Gardens of the 1970's and 1980's

- Chub Harper and the collection at The Bickelhaupt Arboretum



THE PRESENT INTO THE FUTURE

- Collectors are now able to network through the Conifer Society and the **Tough Act to Follow** is being followed up very nicely.



THE PRESENT INTO THE FUTURE

- **Today a mix of experienced and new conifer collectors are adding to the conifer pallet at an astounding rate.**
- **This mix includes people like Joe Stupka, Dennis Dodge, Randy Dykstra and many others, too numerous to mention in a one hour presentation.**
- **It also includes people who were taken away too soon like Pete Girard and JC Raulston.**

THE PRESENT INTO THE FUTURE

- Collectors



DON HOWSE



THE PRESENT INTO THE FUTURE

- Collectors



PANAYOTI
KELAIDIS

THE PRESENT INTO THE FUTURE

- Collectors



LARRY STANLEY

THE PRESENT INTO THE FUTURE

- Collectors



**JERRY
MORRIS**



THE PRESENT INTO THE FUTURE

- Collectors



CINDY PEASE

DENNIS LEE



THE PRESENT INTO THE FUTURE

ACS DENVER

• Collectors



THE PRESENT INTO THE FUTURE

MARTIN BROOKS

• Collectors



THE PRESENT INTO THE FUTURE

- Collectors



THE PRESENT INTO THE FUTURE

- Collectors

GARY
WITTENBAUGH



THE PRESENT INTO THE FUTURE

- Collectors

GEORGE OKKEN

CHARLES
PACQUELET



THE PRESENT INTO THE FUTURE

RICHARD EYRE • Collectors



THE PRESENT INTO THE FUTURE

Clark Coe

- Collectors



THE PRESENT INTO THE FUTURE

- Collectors



THE PRESENT INTO THE FUTURE

MARLOWE
MARCUS

• Collectors



THANK YOU
FOR YOUR
ATTENTION

ROBERT L. FINCHAM
ACS 20TH ANNUAL MEETING
JULY 19, 2003