


Challenges in organic black currant production



v/Sigrid Mogan



Organic Ribes production

- Worked with different projects since 1998
- Main subjects plant protection



Area organic fruit and berries Norway 2009, daa

Kultur	Organic	Karens	Total
Apples	687	377	1 064
Other fruit	237	287	525
Strawberry	94	87	181
Other berries	439	114	553

Aim in organic black currant

- Reasonable production and income
- Products in the market



Reasonable production?

- Conventional production
800-1500 kg pr daa
- Study tour to Denmark
2002: 2-400 kg pr daa
- Sweden: 2-400 kg pr daa
- Our goal: 500 kg pr daa
- **Until now: 2-400 kg pr daa**



Varieties and leaf disease

Drepanopeziza ribis

2002 – after harvest	Ratio leaves left on the branch/leaves fallen off
Ben Alder	1,1
Kristin	4,3
Håkon	7,0
Ben Tron	9,2

Drepanopeziza ribis 2001



Varieties new planting at Bærgården

- Narve Viking
- Ben Nare
- Ben Tron

Young planting at Bærgården



Bærbuskbladflekk-sopp

Mycosphaerella ribis



Disease sanitation

Overwintering leaves spring 2003



Smitte



Old leaves, new leaves



Blåse bort blad fra treraden



Blåser bort blad



Leaves removed from the plastic



Brushing



Picking up leaves by "vacuum cleaner"



Before and after



Burning old leaves



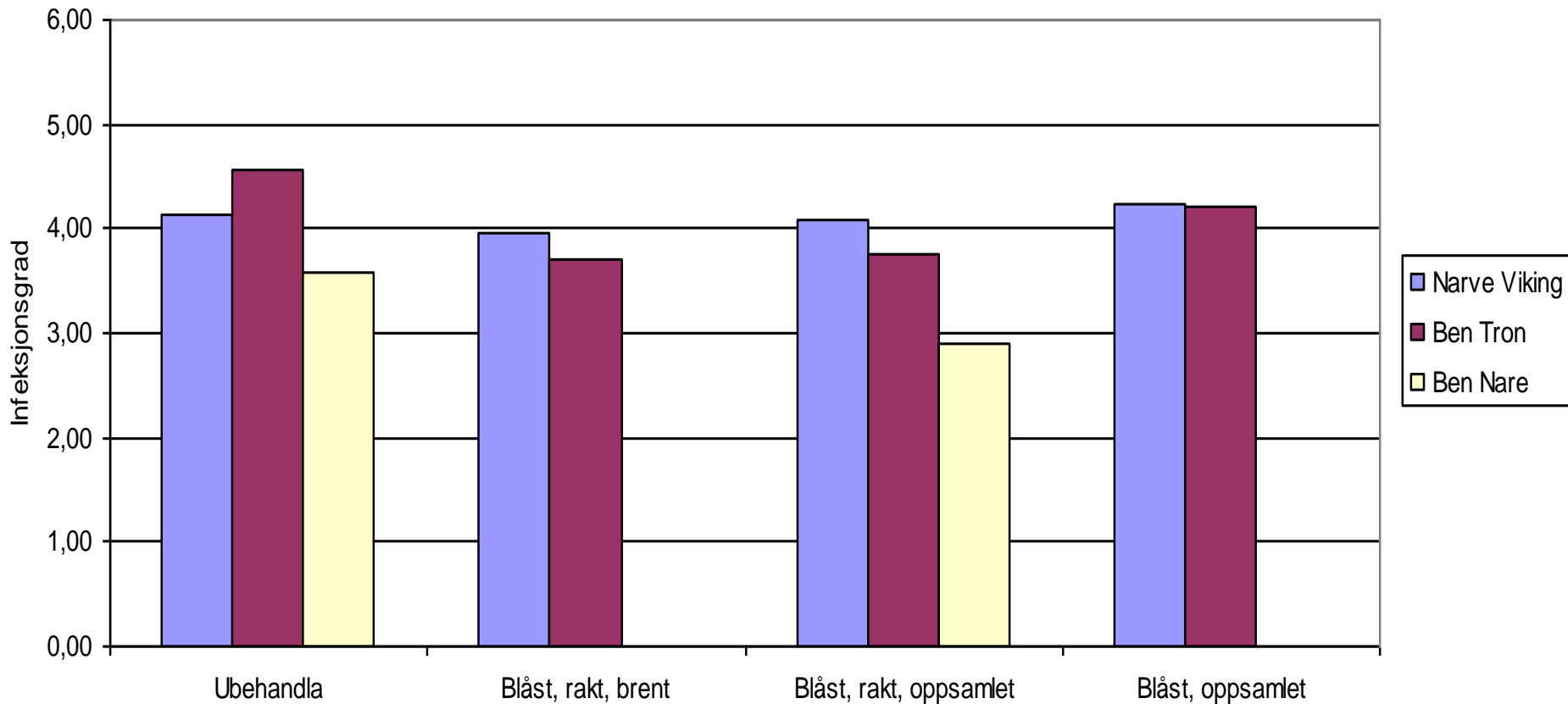
Propanbrenner



Angrep av bladsjukdom 15.07.03

Gjennomsnittlig infeksjonsgrad pr. blad (pr. 10 skudd fra basis)

Infeksjonsgrad: 1= 0 % , 2 = 0-1 % , 3= 2-5 % , 4= 6-20 % , 5= 21-40 % , 6= mer enn 40 %





Other problems in Ribes spp

Nematus ribesii







Spraying with NeemAzal in gooseberries



Sawfly in black currants?

- We have found sawfly in organic field, but no problem
- Problem in some conventional fields!!



Bladveps-larver
snauspiser felt på
kort tid, alvorlige
angrep i Telemark
og Hedmark i
2008



Nyklekte bladvepslarver

foto Stanislav Strabc

Gallmidd

- Not seen in organic field at Bærgården



Ripsskuddmøll

Lampronia capitella

- No problem in organic field at Bærgården





**Ripsskuddmøll, skadebilde: visne skuddtopper,
sidegreiner**

Solbærgallmygg

Dasyneura tetensi



Viktige rovinsekter: Nebbtege (tar egg og larver) og løpebille



Solbærgallmygg

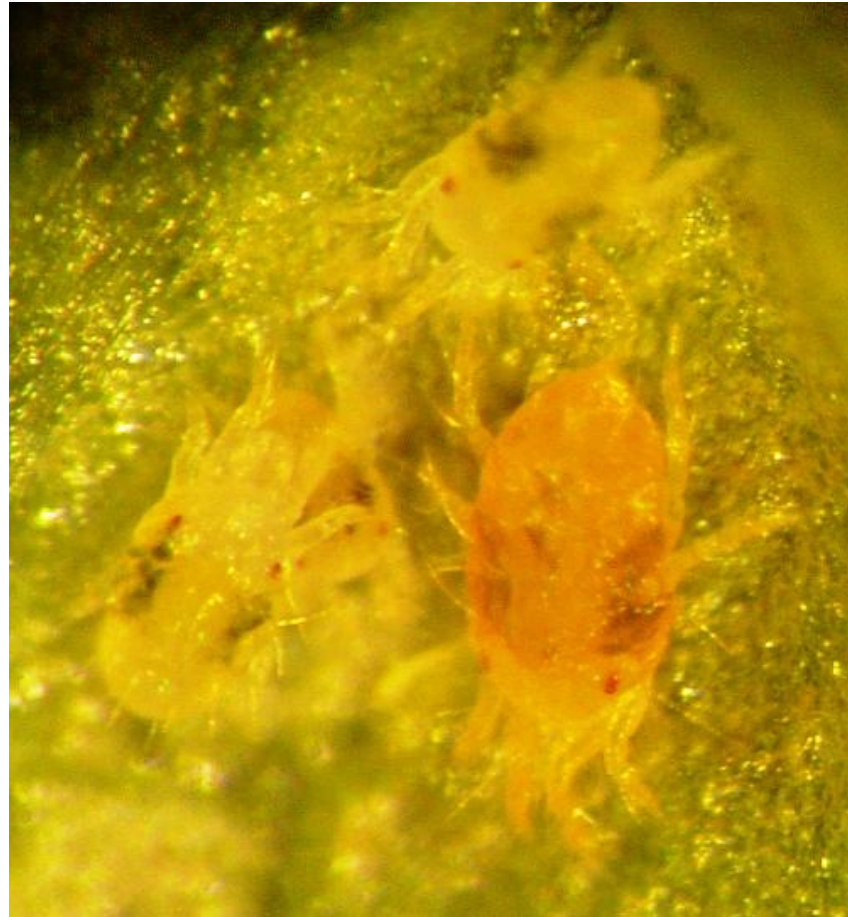


Spidermite in conventional field

august 2006



Spidermite



Predatores found on spidermite

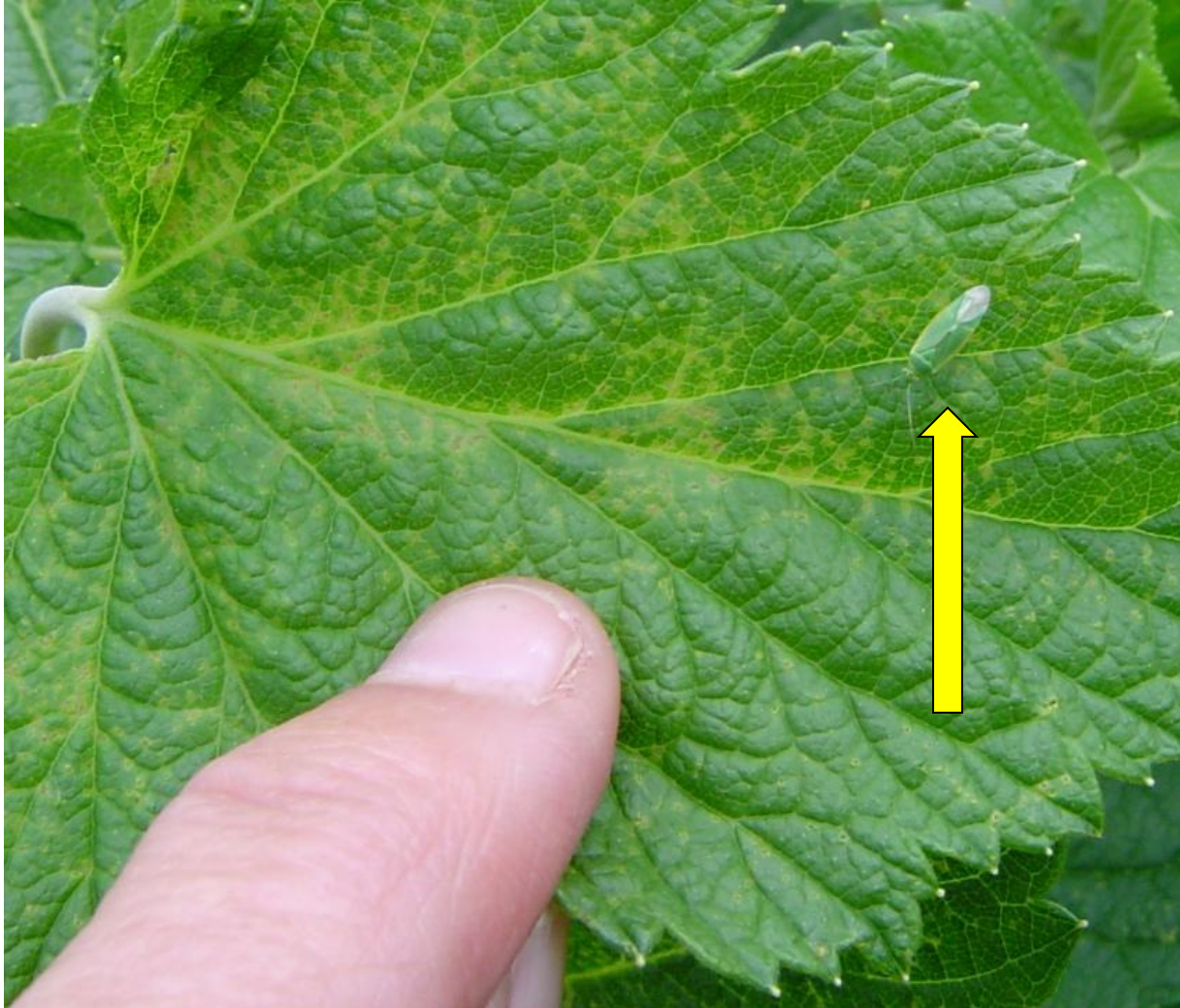


Angrep av tege

Lyse prikker på bladene i skuddspissene, seinere på sommeren nekrotiske flekker



Teger



Hornskjoldlus

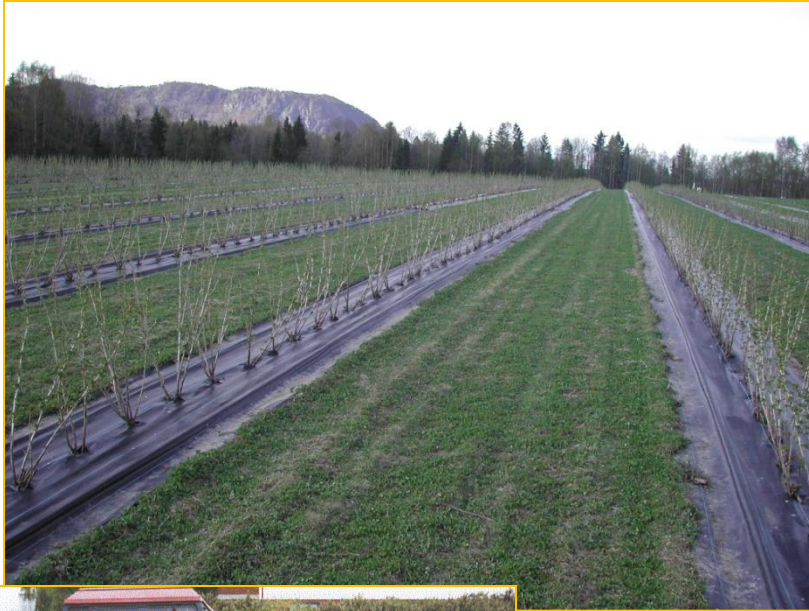


- Utbredt i mange plantinger i 2008
- Ovalforma, brune skjold på greinene
- Glinsende honningdogg på bladene i mai-juni
- Mai-juni: egglegging
- Hunnenes rygg omdannes til skjold
- Masse egg under skjold
- Eggklekking i juli
- Vandrelarver, flere stadier

Bladlus



Weed control



Ribesseminar Drammen 24.mars
2010

Fertilization and plastic cover

- Problem!
- Fertigation? Soluble fertilizer and drip irrigation
- Fertilizer/Manure along the row
- Clover between the rows
 - can give nitrogen
 - But can also take nitrogen, specially in the spring
 - need water

Fertigation with Biovinasse in organic apple field



Challenges

- Varieties
- Frost problems
- Disease problems
- Pestproblems
- Fertilization difficult on plastic cover
- Lack of water in dry periododes
- Too wet periododes

Last words

- Many problems
- We have not reached 500 kg pr daa, but we are one the way....
- Tank you for the attention

